



CUSTOMER INFORMATION SHEET – NO. 05

CRUISEMASTER™ DO65

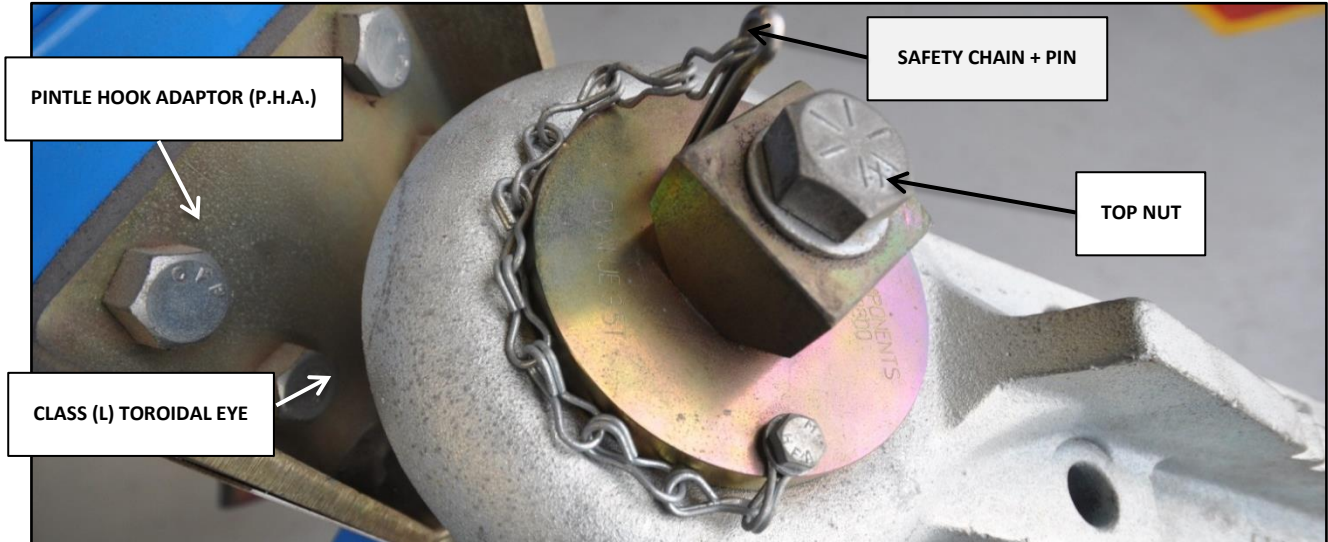


FIGURE 1: P.H.A. D-Value 3.5t (34.3kN)	FIGURE 2: TOW BAR TONGUE RATING 3.5t MAX

1 METHODS OF ATTACHMENT

- D-Rating of 3.5t applies only when fitted to the pintle hook adaptor see (FIGURE 1) - PART NO. 18F XVC017
- In all other fittings, the coupling is rated to 3.5t or towbar rating (FIGURE 2) - whichever is lower
 - Ensure the tow bar rating is suitable for application
 - Drill a 6mm hole at a radius of 20mm from the pin hole into the tow bar tongue for anti-rotation pin to locate into (FIGURE 3) at a depth of 10mm
- Main 7/8in nut to be torqued to 560 Nm (410 ft/lbs)

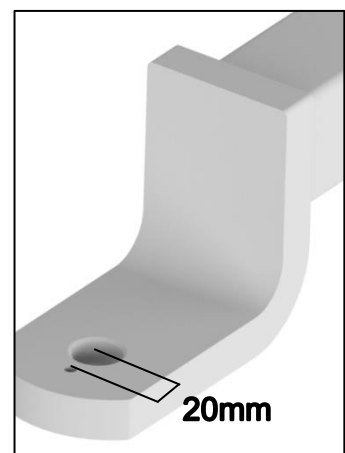


FIGURE 3 TOW BAR TONGUE

2 TRAILER COUPLING

- To be used with class (L) toroidal drawbar eyes only.
- Swivel type couplings should not be used without anti swivel plate 18B-9304 (Available Separately).
- Ensure that the ring does not foul any part of the coupling.



ANTI SWIVEL
PLATE

3 CONNECTION

18B-9304

- Top nut should be firmly tightened with supplied spanner, always fit safety locking pin.
- Keep fingers clear of the hitch when coupling / uncoupling.
- Ensure the weight of the drawbar is taken on the jockey wheel when coupling / uncoupling.

MAINTENANCE & SAFETY

1. Keep hands and fingers clear of coupling when attaching.
2. Ensure trailer safety chains are attached whilst coupling or uncoupling.
3. Lubricate the coupling regularly using grease nipple on base.
4. Replace boot if torn or damaged (PART NO. 18F XVC 200).
5. Ensure the safety pin and chain is always fitted and in good condition.
6. Check all bolts regularly for tightness.
7. Do not use Coupling for recovery purposes.