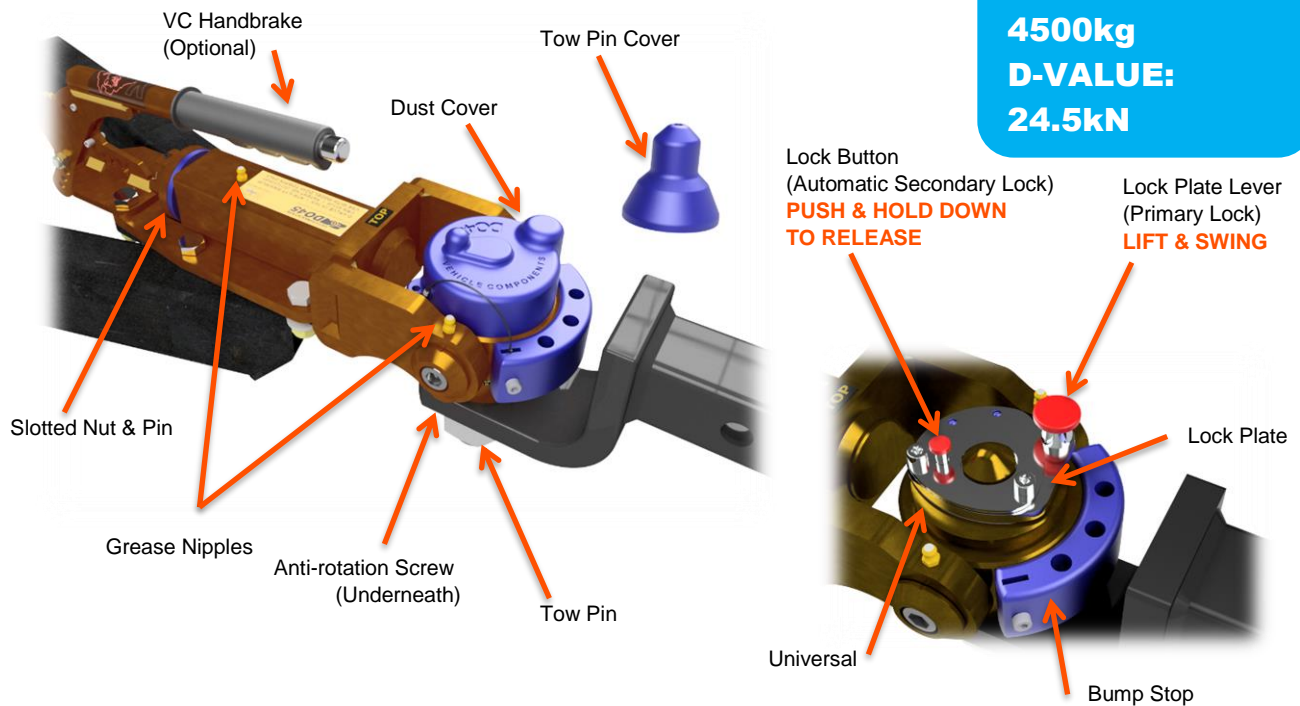


**CUSTOMER INFORMATION SHEET – NO. 19**

**CRUISEMASTER™ DO45 – ALL-TERRAIN DROP-ON COUPLING**



**1 Mounting the DO45 COUPLING onto trailer drawbar:**

To secure Coupling to Trailer use the following fasteners in all six mounting holes: M14 Class 8.8 torqued to 160N.m or 9/16" Grade 5 torqued to 128 lbs.ft. Use Nyloc nuts or spring washers on all bolts.

**DO NOT WELD COUPLING TO DRAWBAR**

**Drawbar weight not exceeding 450kg is recommended**

**2 Mounting the DO45 TOWING PIN onto vehicle towbar:**

- Fit Towing Pin to towbar using spring washer, 1 1/4" UNF nut and C-spanner supplied.
- Fasten 1 1/4" nut thoroughly (1,100N.m or 800lb.ft)

**3 COUPLING UP:**

For coupling the DO45 to your vehicle, we recommend the following:

1. Trailer should only be coupled (and uncoupled) on level ground.

2. Make sure Towing Pin and Universal is free of sand, dirt and foreign objects, and is lightly lubricated.
3. Raise height of trailer Coupling above vehicle Towing Pin by adjusting Jockey Wheel or Stand.
4. Ensure coupling rotation is in the upright position with the **TOP** label facing upwards.
5. Push and hold Lock Button down, lift and turn Lock Plate Lever until in full open position.
6. Align Coupling over Towing Pin by moving either vehicle or trailer, and lower Coupling onto Towing Pin. Ensure that Universal is fully seated on Towing Pin.
7. Lift and move Lock Plate Lever until it latches into position. Ensure Lock Button springs back up, indicating that the secondary lock is engaged.
8. Place Cover over locking mechanism so that Lock Plate Lever aligns with matching cavity in cover. Press Cover downward until it snaps into position.

### MAINTENANCE & SAFETY

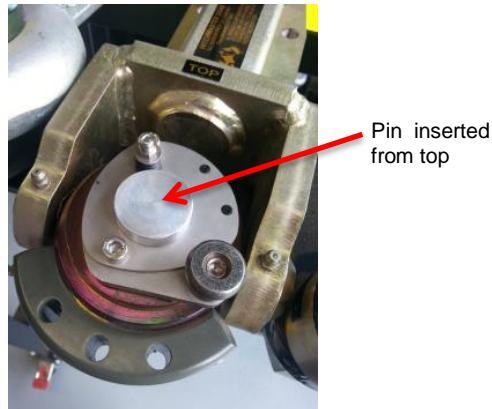
- As all installations can be different it is strongly advised that a check is carried out to ensure that movement of the coupling occurs in all directions.
- Keep hands and fingers clear of coupling when attaching.
- Ensure trailer safety chains are attached whilst coupling or uncoupling.
- Keep Towing Pin and Universal mating surfaces clean and lightly greased at all times.
- Check condition of O-Ring and Tow Pin Bush and replace if necessary (VC kit no 18D HM 102).
- Regularly lubricate grease points with multi-purpose grease.
- Check all bolts regularly for tightness.
- Do not use Towing Pin or Coupling for recovery purposes.
- Periodic adjustment of Slotted Nut & Pin or Anti-Rotation Screw may be required and should be performed by a competent person.
- Flush with water if locking mechanism does not open fully due to dirt ingress.
- Cruisemaster™ DO45 can be used with load distribution hitches providing the coupling movement is not obstructed and the maximum downward load of 450kg is not exceeded.
- Clearance of the WDH should also be checked against the trailer drawbar to ensure obstruction will not occur particularly in reversing situations.

## CRUISEMASTER™ BI-LOCK SECURITY PIN

Ensure the safety of your camper or caravan when you're not there with the ultimate coupling lock.

The Cruisemaster™ Bi-Lock assembly consists of a dummy pin, two keys, a lock and a dust cover. Its components are made of stainless steel.

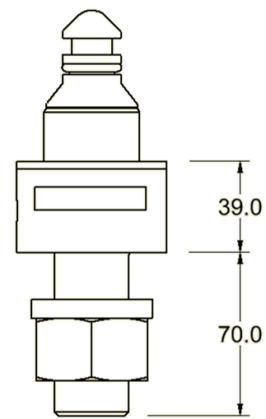
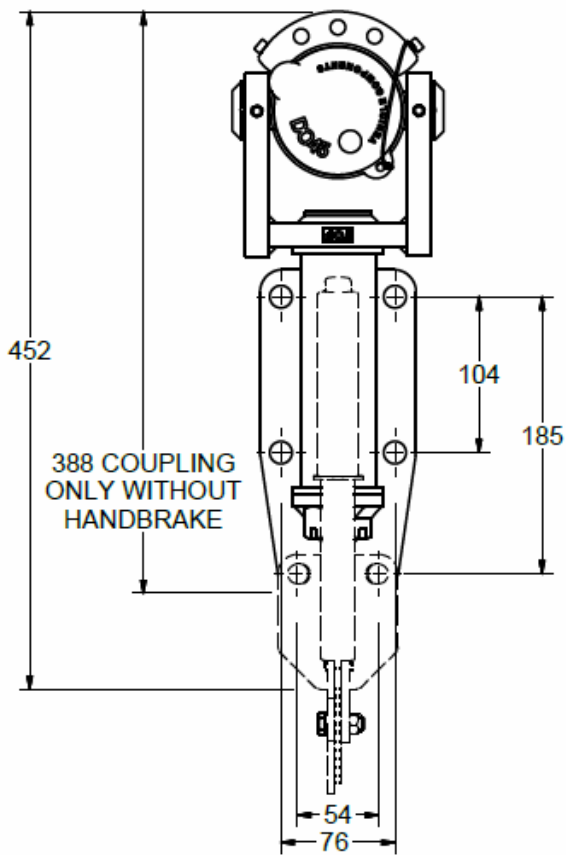
How does it work? The dummy pin is to be inserted into the DO35 & DO45 universal joint from the top end and the tip of the pin will protrude out at the bottom. The lock is then fitted to the protruding end of the pin and can be locked with a key. The coupling becomes inoperable which prevents others being able to hitch up to your trailer or van when you're not there.



Bi-lock pin installed in DO45 coupling (Top View)

#### Installation of Bi-Lock pin into DO35 / 45 coupling

- Ensure trailer is detached from vehicle
- Unlock coupling mechanism
- Drop pin through the locking mechanism from the top so the flange sits against top surface of lock
- Lock the coupling mechanism so to secure the pin in place.
- Lock the Bi-Lock to the bottom of the pin
- Place the rubber cover on to the bi-lock
- Refit coupling dust cap to cover the pin



**TP**  
32mm (1-1/4") TowPin

