

ADO35

3.5 Tonne Coupling Range with key "Visual Indicators"

D035 V3Plus

- Available June 2020 - Current
- Cap reads "Cruisemaster"
- Checklock Gen.2 square cap design
- Rear webbing
- Available with or without handbrake
- Engraved markings



D035 V3

- Available 2017 -2020
- Cap reads "Hitchmaster"
- Checklock Gen.1 "grey" oval cap design
- Available with or without handbrake
- Engraved or stickered markings



D035 V2

- Available 2012 - 2017
- Cap reads "Hitchmaster"
- Checklock Gen.1 "black" oval cap design
- Available with or without handbrake
- SA5 (Gold Coating)
- Stickered markings



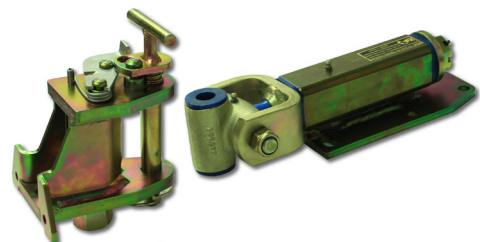
D035 V1

- Available 2009 - 2012
- No cap & Bumper
- 2 hand locking mechanism
- No handbrake
- SA5 (Gold Coating)
- Stickered markings



AT35

- Available 2000 - 2009
- Drop Pin
- No handbrake
- SA5 (Gold Coating)
- Stickered markings



CRUISEMASTER™

Rev.1 June 2020