



AIR CONTROL SYSTEM

AUTO

MANUAL AIR CONTROL

DIGITAL GAUGE

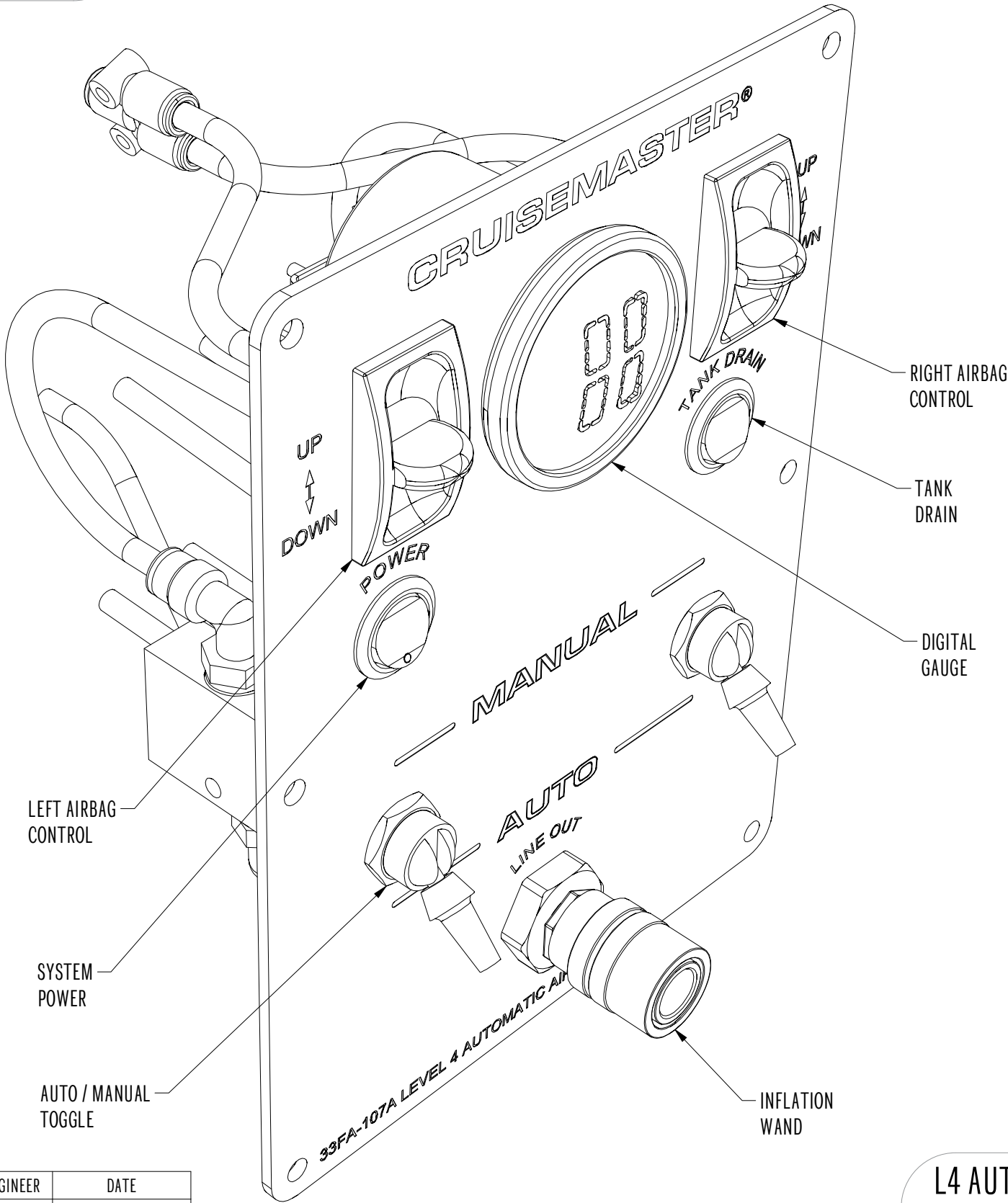
ELECTRONIC TANK DRAIN

TYRE INFLATION PORT

200 PSI COMPRESSOR

11L TANK

AUTO LEVELING



DESIGNED TO BE USED WITH	
CM XT	CM ATX
33SA-AIRKIT-1AS	33SA-AIRKIT-1BS
33SA-AIRKIT-1AT	33SA-AITKIT-1BT

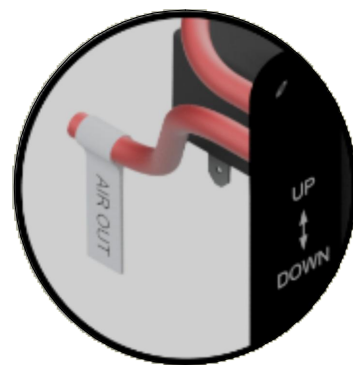
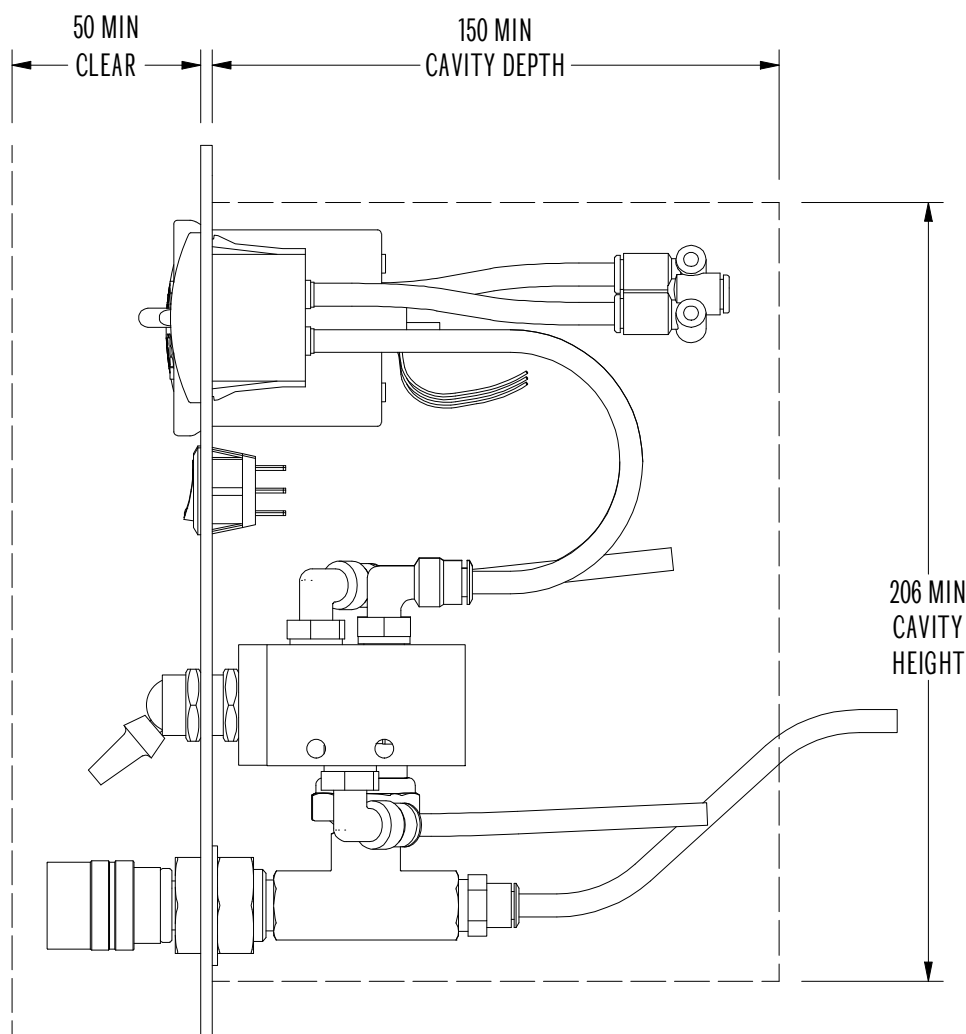
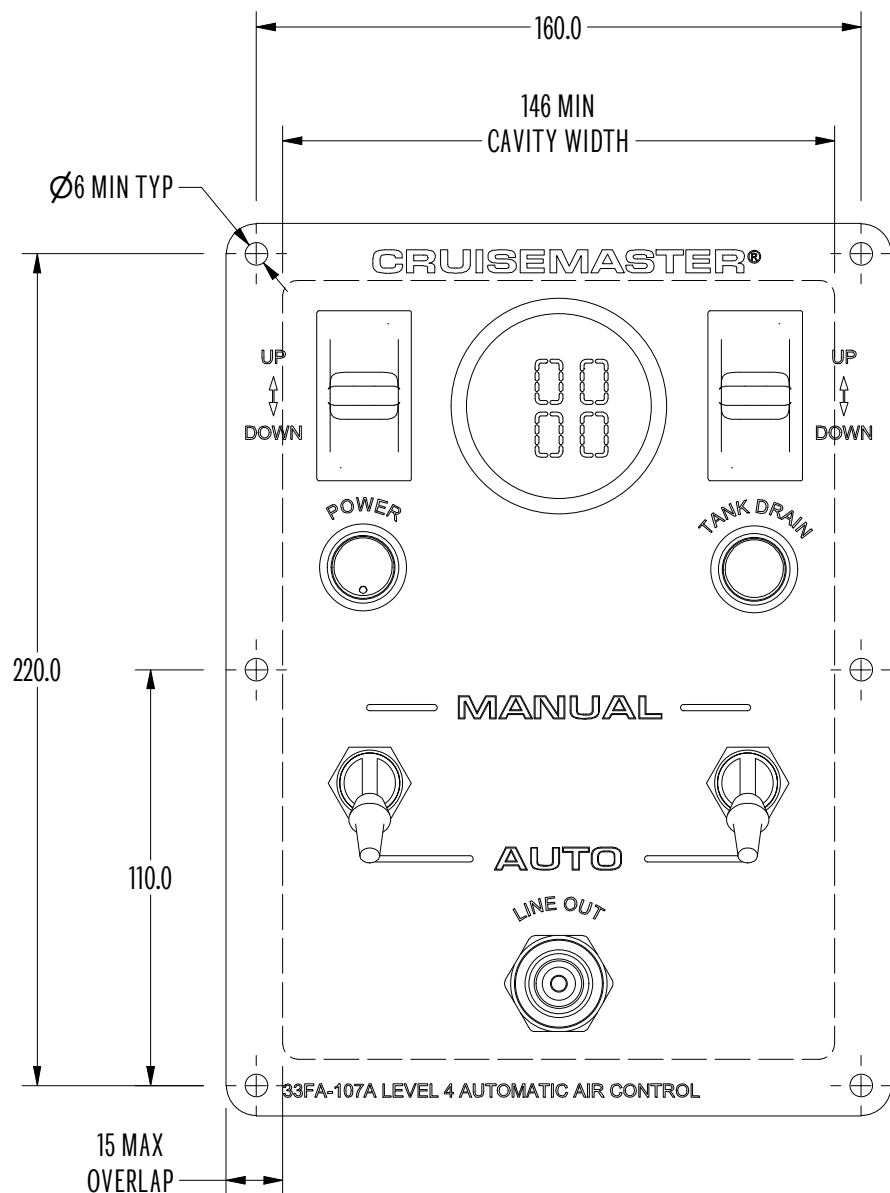
L4 AUTOMATIC CONTROL PANEL PART LIST			
ITEM	QTY	PART NUMBER	DESCRIPTION
1	1	AC7200D	DUAL DIGITAL GAUGE WITH ABM LOGO
2	1	B2520	33FA-107A LEVEL 4 AIR CONTROL PANEL
3	0.28	EF3BR	3MM ELECTRICAL CABLE - BROWN
4	5	EF3T	3MM TWIN CORE ELECTRICAL CABLE
5	0.525	EF3W	3MM ELECTRICAL CABLE - WHITE
6	0.47	EF5B	5MM ELECTRICAL CABLE - BLACK
7	0.82	EF6R	6MM ELECTRICAL CABLE - RED
8	1	EFR40	40 AMP RELAY - 12 VOLT, 4 PIN
9	1	EFSPFB48	FEMALE SPADE TERMINAL - 4MM BLUE (4.8MM WIDTH)
10	3	EFSPFR	FEMALE SPADE TERMINAL - 2.5 TO 3MM RED (6.3MM WIDTH)
11	4	EFSPFR48	FEMALE SPADE TERMINAL - 3MM RED (4.8MM WIDTH)
12	3	EFSPFY	FEMALE SPADE TERMINAL - 5 TO 6MM YELLOW (6.3MM WIDTH)
13	1	ES1000	ROCKER SWITCH - ON-OFF-ON
14	1	ES1200	ROCKER SWITCH - 12V WITH LED OFF-ON
15	2	FAC7100	PNEUMATIC PADDLE SWITCH BARBED
16	1	FAC7305	COMPRESSOR TEE FITTING 1/4 NPT
17	1	FAC7401	QUICK RELEASE COUPLING - AC7401A
18	1	FAC7405	110/150 PSI PRESSURE SWITCH 1/8 NPT
19	1	FN1104-140	NYLON TUBE 1/4 140MM - BLACK
20	4	FN1104-240	NYLON TUBE 1/4 240MM - BLACK
21	2	FN1104-45	NYLON TUBE 1/4 45MM - BLACK
22	2	FN1104-55	NYLON TUBE 1/4 55MM - BLACK
23	3	FN1104-75	NYLON TUBE 1/4 75MM - BLACK
24	1	FAC7420	BULKHEAD CONNECTOR 1/4 X 1/4 NPT
25	4	FQF1503P	Y PIECE 1/4 PTC - SMC
26	1	FQF305	STRAIGHT FITTING 1/4 PTC X 1/4 - CAMOZZI
27	6	FQF504	ELBOW FITTING 1/4 PTC X 1/8 - CAMOZZI
28	2	V338990	TOGGLE VALVE
29	1	YABM1	SMALL ABM CARTON - BROWN 250X250X310

REV	DESCRIPTION	ECN	ENGINEER	DATE
6	Wire gauge specification changed from diameter to area	2085	AB	30/11/2022
5	Steel air tank swapped to aluminium	1803	JT	21/01/2020
4	Updated XT installation to G6, updated schematic for condensation	1730	AB	24/01/2019
3	Added control system part list, added 10m roll air line	1556	AJ	18/01/2017
2	Added auto adjuster valves ATX and XT	1548	AJ	22/09/2016
1	Release for production	1497	AJ	9/07/2016

L4 AUTOMATIC CONTROL PANEL		TITLE
33FA-107A		PART NUMBER
MATERIAL:		FINISH:
ALL DIMENSIONS IN MILLIMETERS UNLESS OTHERWISE STATED DO NOT SCALE SUPPLIER CODE:		DRAWN: AB CHECKED: APPROVED: DATE:
MASS: 0.895 kg VOLUME: 435763.3 mm³		PAGE: 1 of 5 SHEET SIZE: A3
		UNLESS OTHERWISE STATED DIM ± TOL 0 ± 0.5 0.0 ± 0.2 0.00 ± 0.05 MACHINED 3.2 GEN SHORE HARDNESS TOL ± 3 REMOVE SHARP EDGES



CONTROL SYSTEM



FOLLOW LINE LABELING TO CONNECT THE
AIR LINES AND ELECTRICAL WIRING CORRECTLY

GENERAL INSTRUCTIONS

- It is recommended that only a properly qualified person installs the product and carries out maintenance. If you are not qualified and attempt to carry out such work ensure that all safety equipment is used and safety standards are met.
- Ensure that you have read the full Product Manual before attempting to fit the product.
- Ensure the Product Manual is kept with the vehicle and that any vehicle owner and/or operator are fully advised on the system and its operation before attempting to operate it.
- DO NOT connect any electrical components to the vehicle without preparing the electrical system as per the vehicle manufacturer's instructions. Connecting without preparing the vehicle could lead to component failure, vehicle damage or fire.
- If you use a sharp utility knife or razor blade great care must be taken in all cases not to cut yourself during this operation.
- The gauge is NOT weatherproof and is best mounted inside the vehicle.
- The switches should be mounted in a protected area to minimize the effect of moisture and dirt E.g. in or under a tray, in tool box or canopy.
- Air compressors get hot - avoid any flammable liquid or burn risk areas.
- The air tank is rated to a maximum working pressure of 150 psi (10 bar) and this is never to be exceeded.
- Incorrect use of this product can result in damage to the components associated parts and/or the vehicle, which is not covered under warranty.
- Ensure suspension airbags are maintained at the stated ride height at all times and maintain the minimum pressure required and never exceed the maximum, as required by the particular airbag product.

L4 AUTOMATIC CONTROL PANEL

33FA-107A

TITLE

PART NUMBER

MATERIAL:

FINISH:

ALL DIMENSIONS IN MILLIMETERS UNLESS OTHERWISE STATED

DO NOT SCALE

SUPPLIER CODE:

MASS: 0.895 kg

VOLUME: 435763.3 mm³

PAGE: 2 of 5

SHEET SIZE: A3

DRAWN: AB
CHECKED:
APPROVED:
DATE:

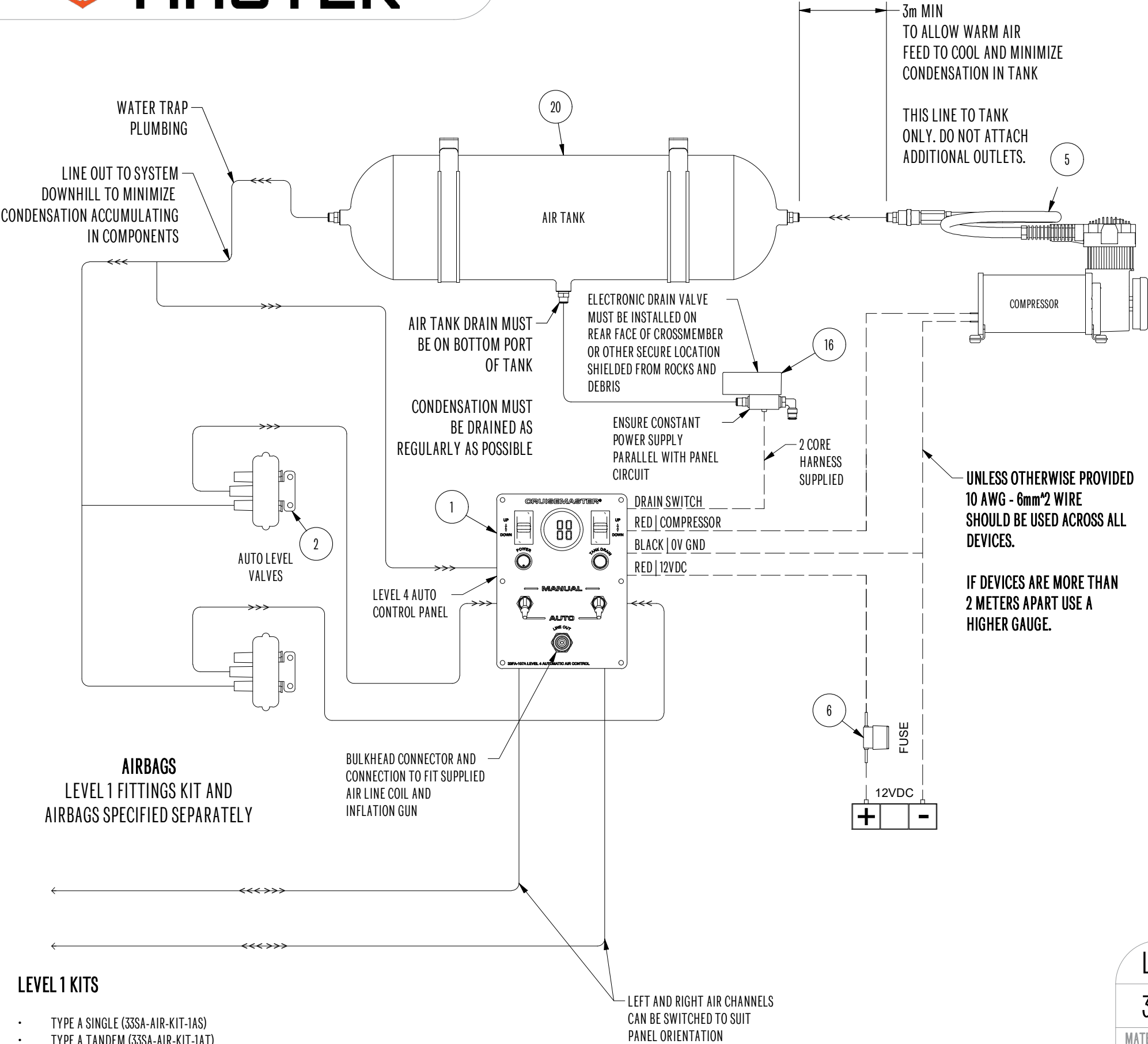
UNLESS OTHERWISE STATED	
DIM	TOL
0 ±	0.5
0.0 ±	0.2
0.00 ±	0.05
MACHINED	3.2

GEN SHORE HARDNESS TOL ± 3
REMOVE SHARP EDGES





SYSTEM SCHEMATIC



- LEVEL 1 KITS
- TYPE A SINGLE (33SA-AIR-KIT-1AS)
 - TYPE A TANDEM (33SA-AIR-KIT-1AT)
 - TYPE B SINGLE (33SA-AIR-KIT-1BS)
 - TYPE B TANDEM (33SA-AIR-KIT-1BT)

KIT CONTENTS			
ITEM	QTY	PART NUMBER	DESCRIPTION
1	1	PKVCL4PANEL	PKVCL4ACK PANEL ASSEMBLY ONLY
2	1	AC3210	AUTO LEVEL VALVE KIT
3	1	AC7401A	AIRBAG MAN INFLATION COIL & WAND
4	1	AC7401ACA	INFLATION COIL ASSEMBLY ONLY - 22'
5	1	AC8110	12V AIRBAG MAN COMPRESSOR
6	1	EFHW40	FUSE HOLDER WITH 40A FUSE
7	1	EFSPMY	MALE SPADE CONNECTOR - YELLOW
8	3	FN1104-10	NYLON TUBE 1/4" 10M - BLACK
9	1	FN2602	HEX SOCKET 1/4" NPT FEMALE
10	4	FQF305	STRAIGHT FITTING 1/4" PTC X 1/4"
11	3	FQF504	ELBOW FITTING 1/4" PTC X 1/8
12	1	FQF505	ELBOW FITTING 1/4" PTC X 1/4"
13	4	FX1040B102	3/8 UNC HEX BOLT X 1" GR5
14	4	FX1040N201	3/8 UNC NYLOK NUT
15	4	FX104XW102	3/8 FLAT WASHER 7/8 OD
16	1	PKTDCK	TANK DRAIN COMPONENTS KIT
17	1	WCOMP	COMPONENT LIST
18	1	YABM3	LARGE ABM CARTON - BROWN
19	1	ZBAGPLAIN	PLAIN POLY BAG
20	1	AC9013	ALUMINIUM AIR TANK 3G-11L

L4 AUTOMATIC CONTROL PANEL

33FA-107A

MATERIAL:

FINISH:

ALL DIMENSIONS IN MILLIMETERS UNLESS OTHERWISE STATED

DO NOT SCALE

SUPPLIER CODE:

MASS: 100.053 kg

PAGE: 3 of 5

VOLUME: 14053097.7 mm³

SHEET SIZE: A3

DRAWN: AB

CHECKED:

APPROVED:

DATE:

TITLE

PART NUMBER

UNLESS OTHERWISE STATED

DIM		TOL
0	±	0.5
0.0	±	0.2
0.00	±	0.05
MACHINED		3.2

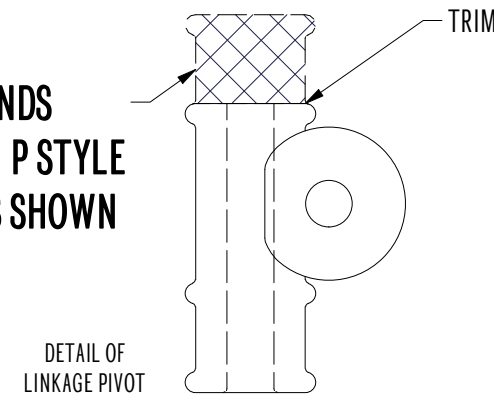
GEN SHORE HARDNESS TOL ± 3

REMOVE SHARP EDGES



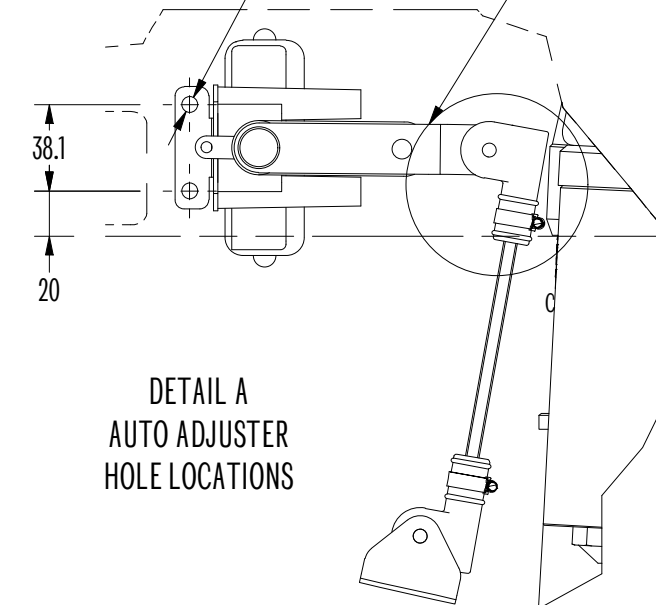
ATX LEVEL 4 CONTROL ARM INSTALLATION INSTRUCTIONS

2. FOR ROD ENDS
OTHER THAN P STYLE
TRIM END AS SHOWN



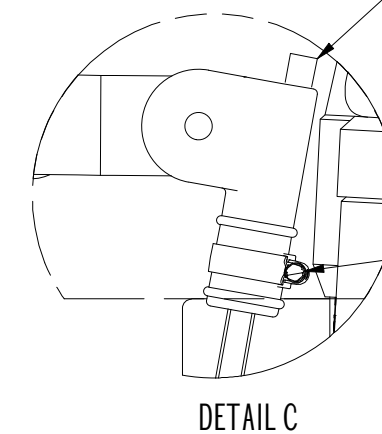
Ø6.0 TYP
DRILL AND TAP AS REQUIRED TO SUIT
IF USING SELF TAPPING METAL SCREWS ENSURE
8G (4.2mm) x 16mm LONG MINIMUM

3. INSTALL LEVEL VALVES
AS SHOWN WITH SUSPENSION
AT RIDE HEIGHT AND SET VALVE
LEVERS TO HORIZONTAL

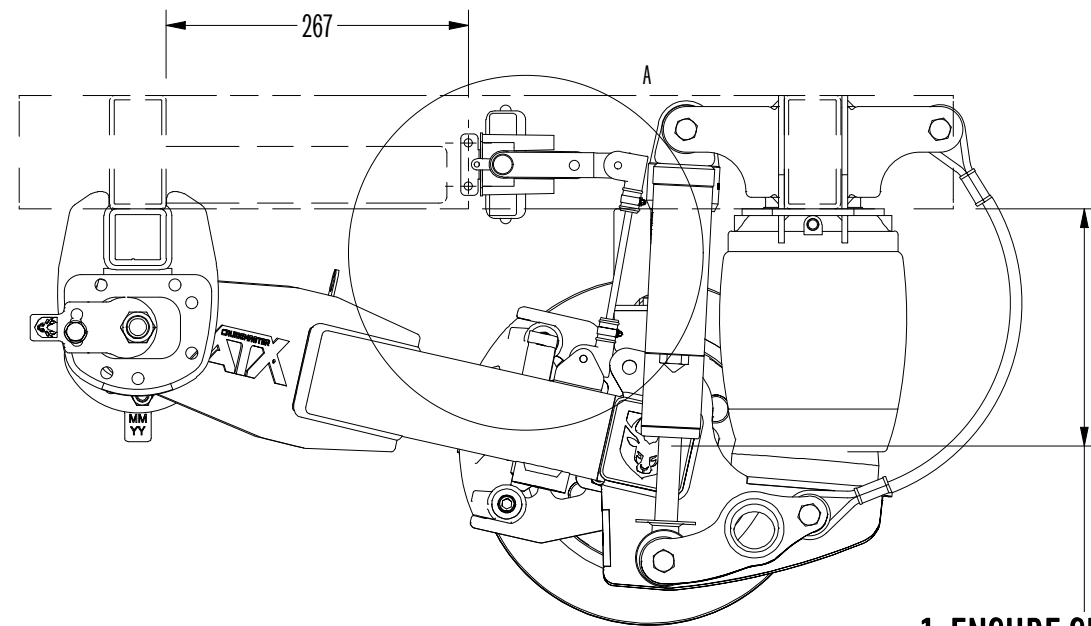


4. TRIM EXCESS
ROD LENGTH FLUSH
WITH END FACE

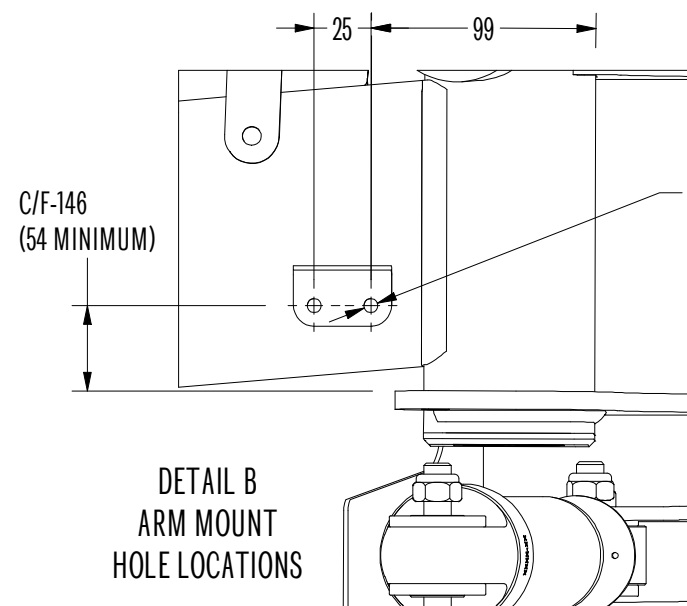
5. ENSURE CLAMPS
ARE ORIENTED TO
CLEAR BRAKE/AIR
LINES



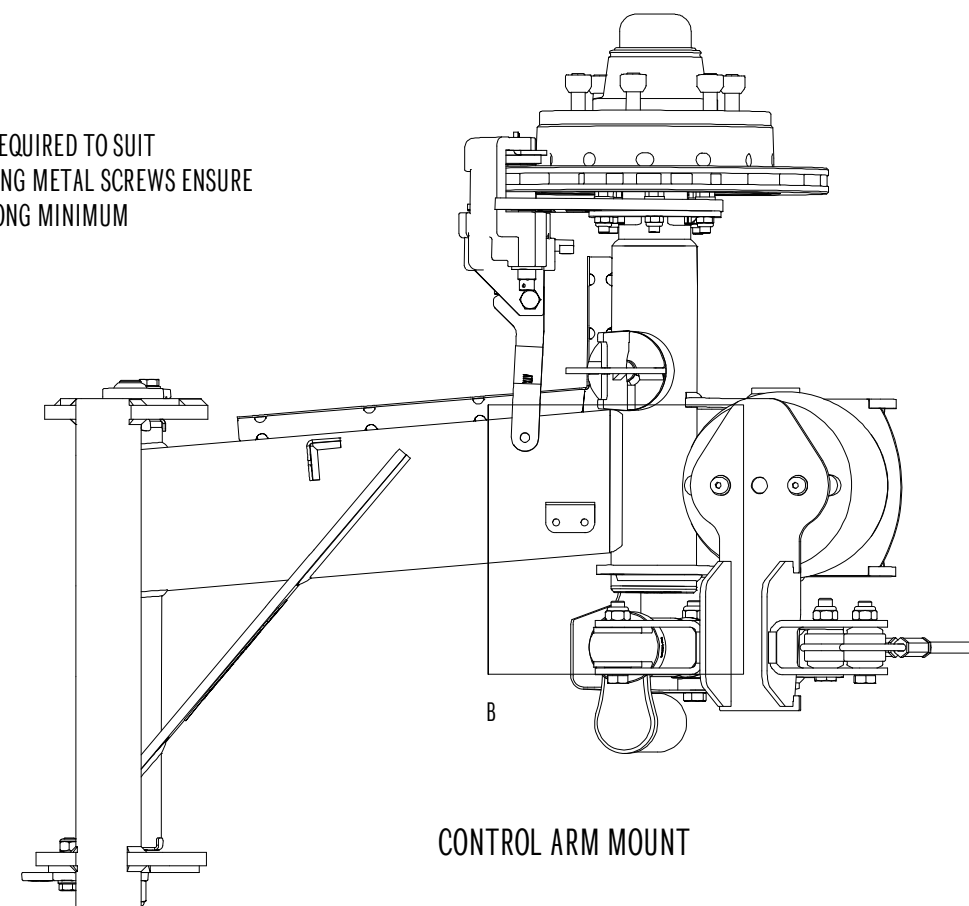
1. ENSURE SUSPENSION
IS AT CORRECT
RIDE HEIGHT



AUTO ADJUSTER LOCATION



CONTROL ARM MOUNT



WARNING

IF CHASSIS TO FACE EXCEEDS 200 AND ANTI ROLL BAR IS INSTALLED MOUNTING INSTRUCTIONS ARE NOT APPLICABLE. A NEW MOUNTING LOCATION MUST BE USED THAT DOESN'T HAVE ANY INTERFERENCE WITH THE FOLLOWING.

- ANTI-ROLL BAR
- CHASSIS
- VALVE TRAVEL LENGTH
- FLOOR OF THE CARAVAN OR TRAILER

NOTE

ORIENTATION OF MOUNTING BRACKET AND CONTROL LEVER MAY VARY DUE TO CASSIS TO FACE AND THE LOCATION OF CHASSIS BRACING.

L4 AUTOMATIC CONTROL PANEL

TITLE

33FA-107A

DRAWING NUMBER

ALL DIMENSIONS IN MILLIMETERS UNLESS OTHERWISE STATED

DO NOT SCALE

P: (07) 3624 3800

W: CRUISEMASTER.COM.AU

E: SALES@CRUISEMASTER.COM.AU

A: 352B BILSEN ROAD, GEEBUNG, QLD 4034

DATE:

REV: 6

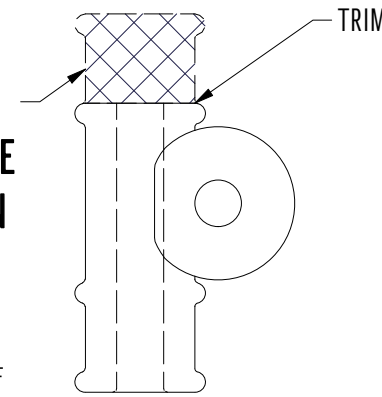
SHEET SIZE: A3

PAGE: 4 of 5



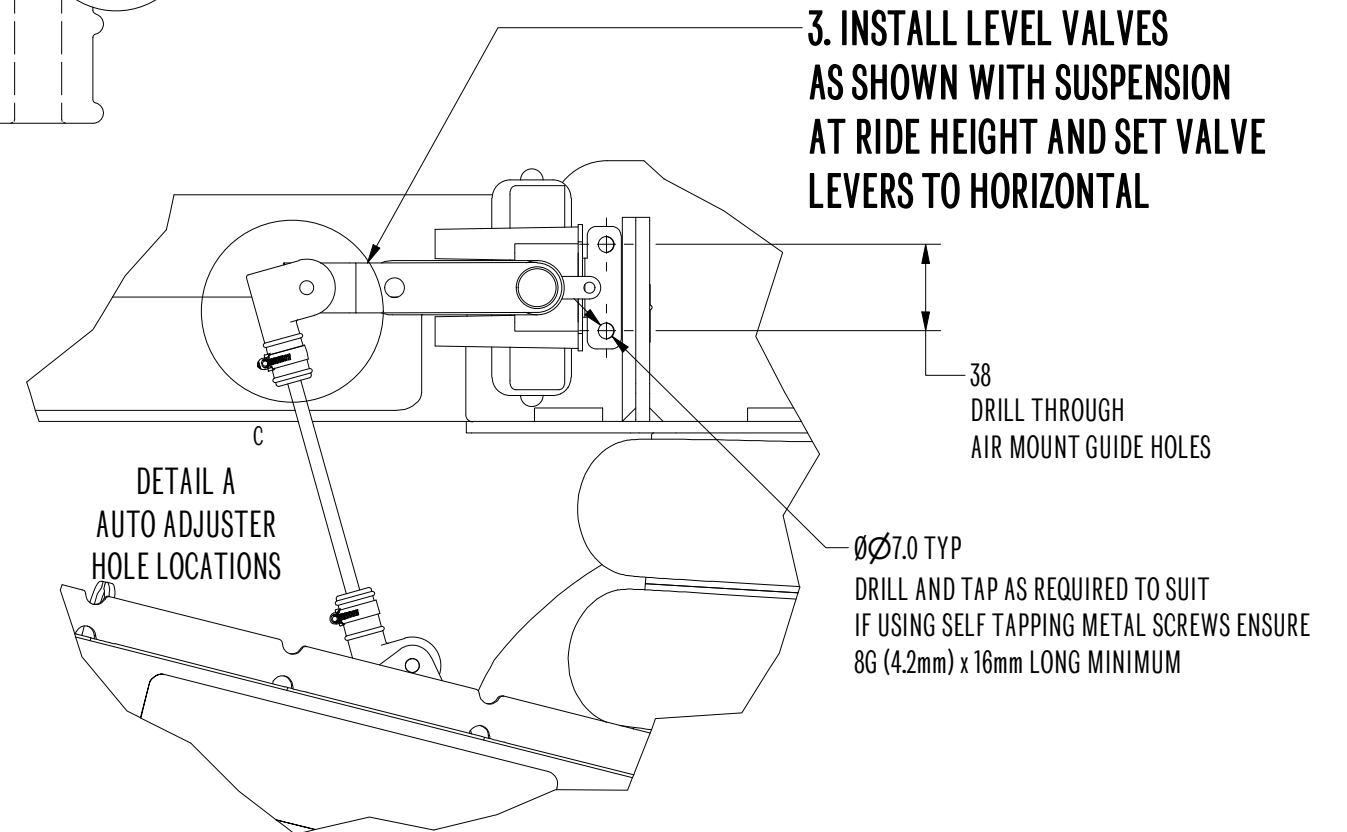
XT LEVEL 4 CONTROL ARM INSTALLATION INSTRUCTIONS FOR 150mm CHASSIS

2. FOR ROD ENDS
OTHER THAN P STYLE
TRIM END AS SHOWN



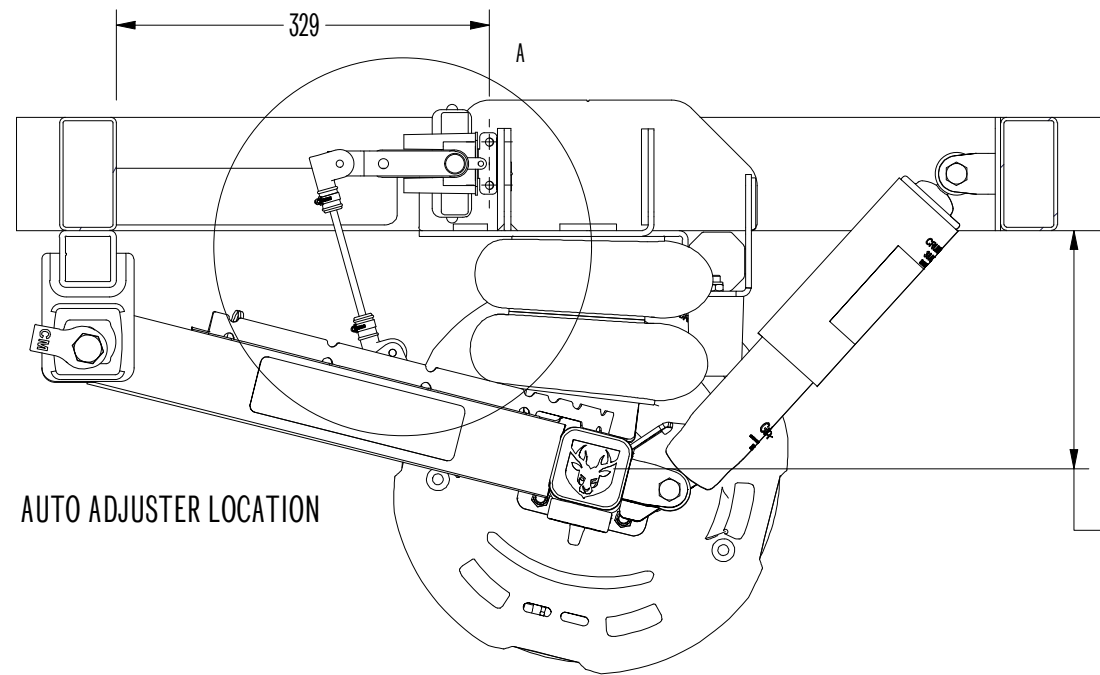
DETAIL OF
LINKAGE PIVOT

3. INSTALL LEVEL VALVES
AS SHOWN WITH SUSPENSION
AT RIDE HEIGHT AND SET VALVE
LEVERS TO HORIZONTAL



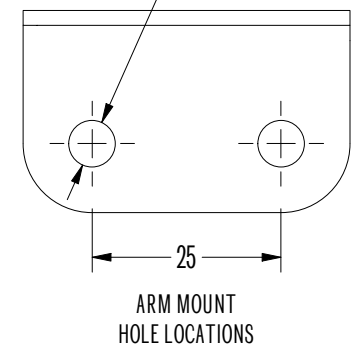
Ø7.0 TYP
DRILL AND TAP AS REQUIRED TO SUIT
IF USING SELF TAPPING METAL SCREWS ENSURE
8G (4.2mm) x 16mm LONG MINIMUM

1. ENSURE SUSPENSION
IS AT CORRECT
RIDE HEIGHT

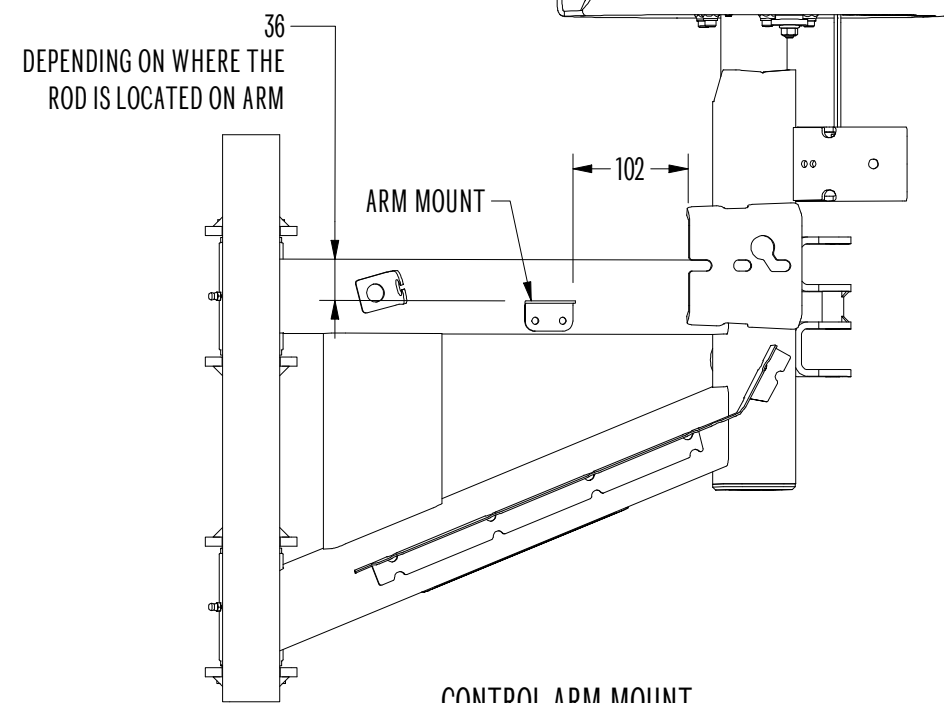


AUTO ADJUSTER LOCATION

Ø6 TYP
DRILL AND TAP AS REQUIRED TO SUIT
IF USING SELF TAPPING METAL SCREWS ENSURE
8G (4.2mm) x 16mm LONG MINIMUM

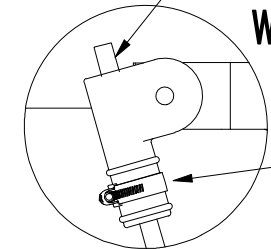


ARM MOUNT
HOLE LOCATIONS



CONTROL ARM MOUNT

4. TRIM EXCESS
ROD LENGTH FLUSH
WITH END FACE



DETAIL C

5. ENSURE CLAMPS
ARE ORIENTED TO
CLEAR BRAKE/AIR
LINES

NOTE

ORIENTATION OF MOUNTING BRACKET AND CONTROL LEVER MAY VARY
DUE TO CASSIS TO FACE AND THE LOCATION OF CHASSIS BRACING.

L4 AUTOMATIC CONTROL PANEL

TITLE

33FA-107A

DRAWING NUMBER

ALL DIMENSIONS IN MILLIMETERS UNLESS OTHERWISE STATED

DO NOT SCALE

P: (07) 3624 3800
W: CRUISEMASTER.COM.AU
E: SALES@CRUISEMASTER.COM.AU
A: 352B BILSEN ROAD, GEEBUNG, QLD 4034

DATE:
REV: 6
SHEET SIZE: A3
PAGE: 5 of 5