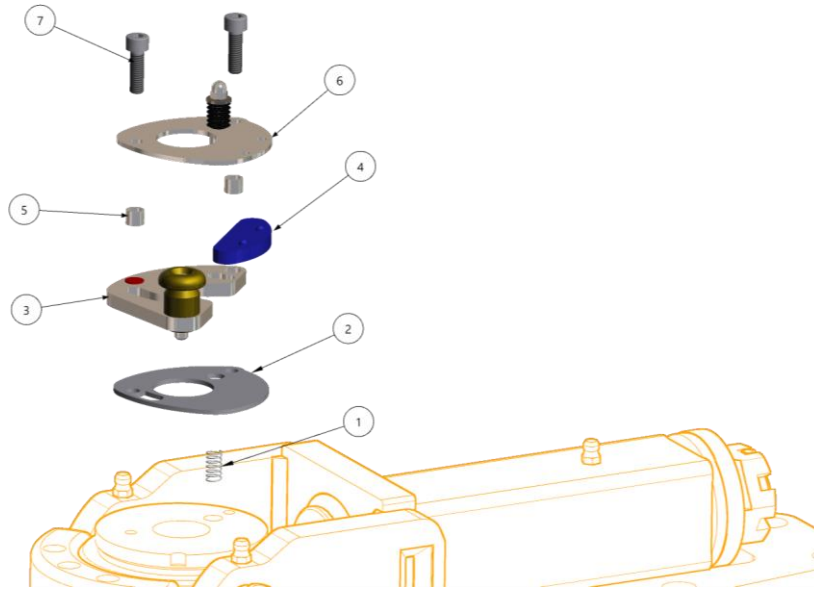


CUSTOMER INFORMATION SHEET – NO. 37

DO45 LOCKING MECHANISM REPLACEMENT INSTRUCTIONS



Kit Contents

The DO45 lock refurbishment kit will provide everything needed to restore the locking mechanism only. Details of contents is as follows -

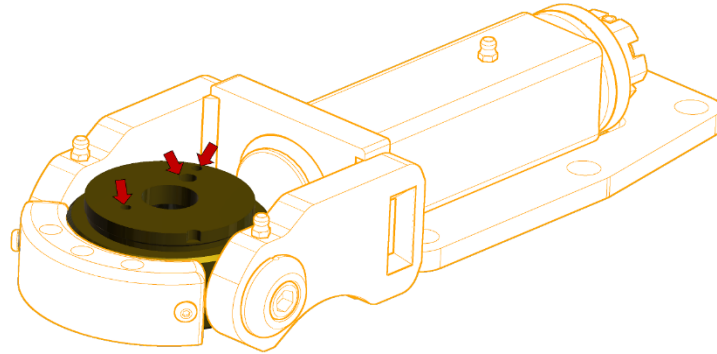
ITEM	ITEM QTY	DESCRIPTION
1	1	PLUNGER SPRING
2	1	WASHER PLATE
3	1	LOCK PLATE
4	1	POLY DUST GUARD
5	2	BOLT SLEEVE
6	1	COVER PLATE BUTTON ASSEMBLY
7	2	M6 X 20 SHCS 304SS W LOCTITE

Upon receiving the new kit remove all remnants of the old kit, including the bolts, and discard.

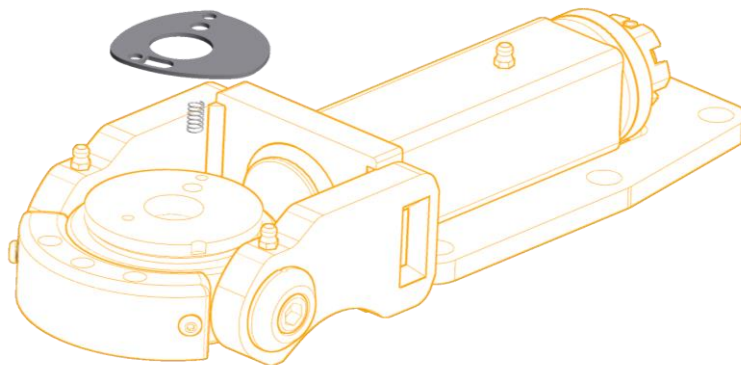
FAILURE TO FOLLOW ANY OF THESE DIRECTIONS MAY RESULT IN COUPLING FAILURE.

1. Ensure all holes are clear of Loctite or any other debris, which may be remaining. A solvent is recommended at this point as well as a clean M6x1.0 tap run down the threads

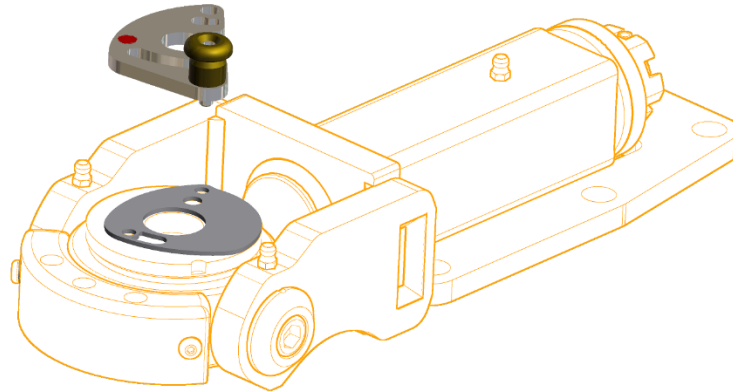
to ensure they are clear. Blow out with compressed air or invert the universal so all remaining solvent is able to drain out before attempting to assemble the new mechanism. Solvents remaining in the threads may affect the Loctite causing the mechanism to work lose during operation.



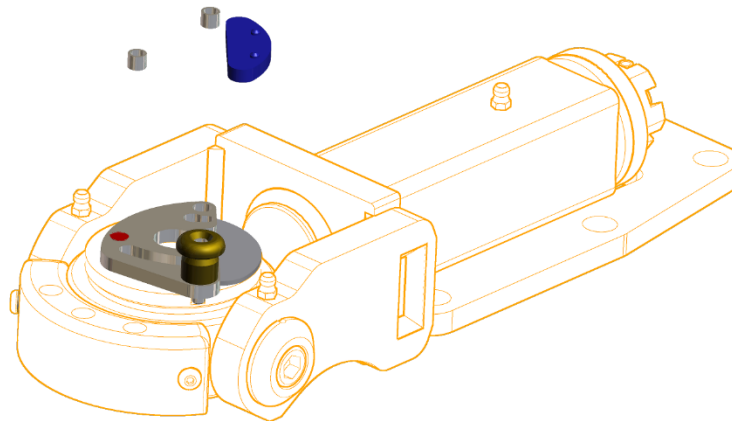
2. Once the holes are clear, the first step is to place the plunger spring in its location hole the universal. Position the washer plate on the universal ensuring all holes are lined up.



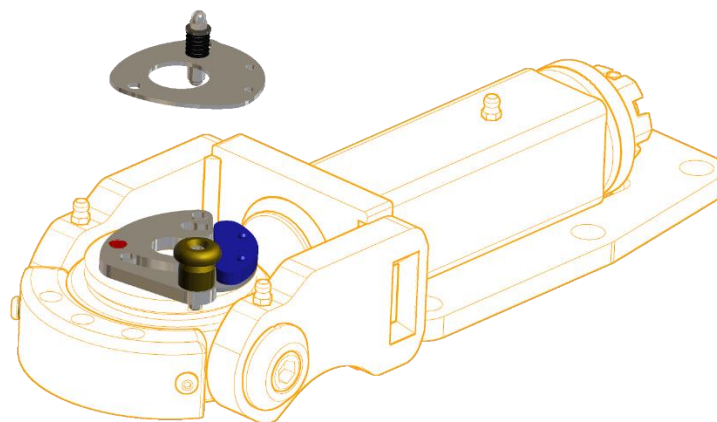
3. Next, position the pre-assembled lock plate over the washer making sure all holes are lined up through to the universal.



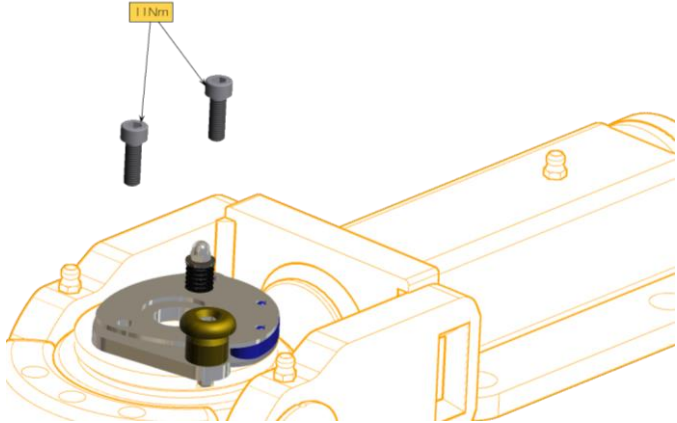
4. Fit the bolt sleeves through the locking plate in line with the threaded holes in the universal. Also place the poly dust guard on the washer plate with the two small locating bosses facing up.



5. Place the cover plate on top of the assembly with all holes lined up – including the dust guard and bolt holes. Also ensure at this point the secondary lock spindle is returning after depressed ensuring spring action.



6. Lastly, assemble the pre-locite bolts through the locking mechanism into the threaded universal. Ensure these bolts are torqued to 11Nm.



7. Check operation of lock assembly and confirm operation with tow pin.