

HITCHMASTER®

ALL-TERRAIN DROP-ON COUPLING

The HITCHMASTER® DO45 coupling is the big brother of the HITCHMASTER® DO35. Caravans up to 4.5T (ATM) can have the benefits of a heavy-duty coupling.

This coupling also incorporates a double automatic locking mechanism, massive articulation in all directions and the patented self-aligning pin.

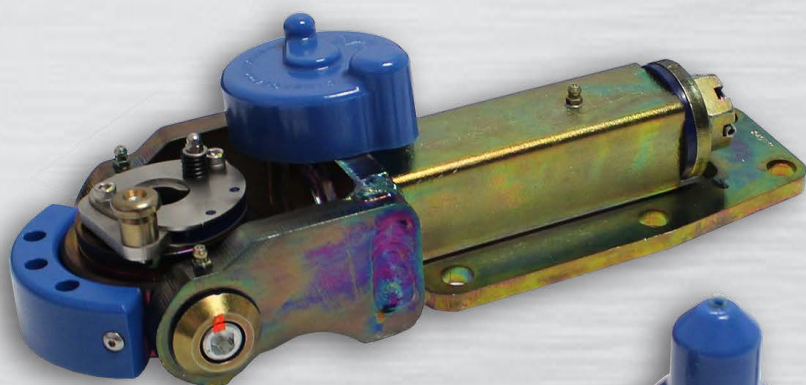
DO45

HITCHMASTER® DO45 comprises safety features such as the dust cover which ensures the coupling is locked and ready to go.

A front cushion is fitted to reduce any damage to the tow vehicle should the coupling process be taken a bit ambitiously. The drop-on system comes into its own when trying to couple up on uneven and soft surfaces. Tool free operation ensures hitching up the trailer is a fast and easy process.

FEATURES & BENEFITS

- 360° rotation reduces roll-over risk
- Greasable pivots and spindle
- Twin lock system with auto secondary lock
- Patented Towing Pin with polyurethane bush, 1 1/4" nut & spring washer
- Towing pin cover



ALSO AVAILABLE

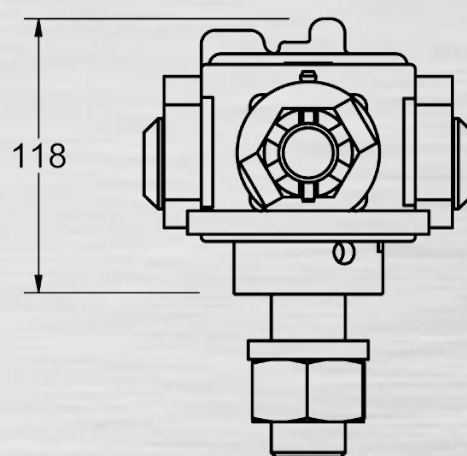
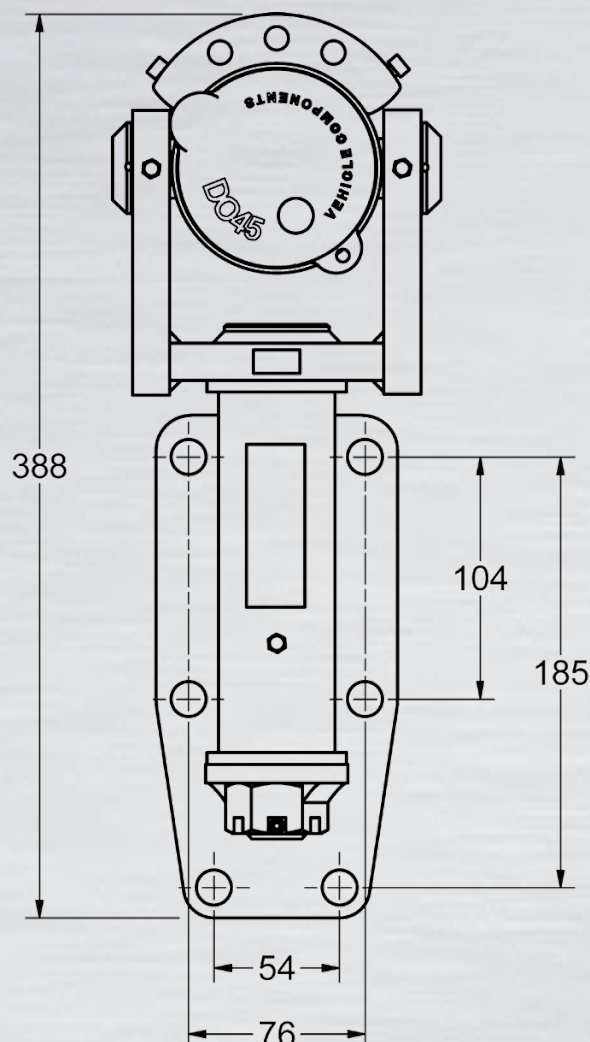


Spanner, tow pin cover and tow pin are standard inclusions.

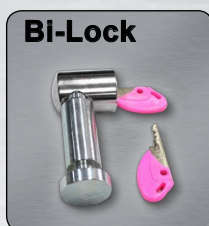
2 YEARS MANUFACTURER'S WARRANTY • DESIGNED, TESTED & MANUFACTURED IN AUSTRALIA

HITCHMASTER®

ALL-TERRAIN DROP-ON COUPLING



Optional Extras



2 YEARS MANUFACTURER'S WARRANTY • DESIGNED, TESTED & MANUFACTURED IN AUSTRALIA

Give us a call on **1300 35 45 65** or visit our website
vehiclecomponents.com.au to find out more

