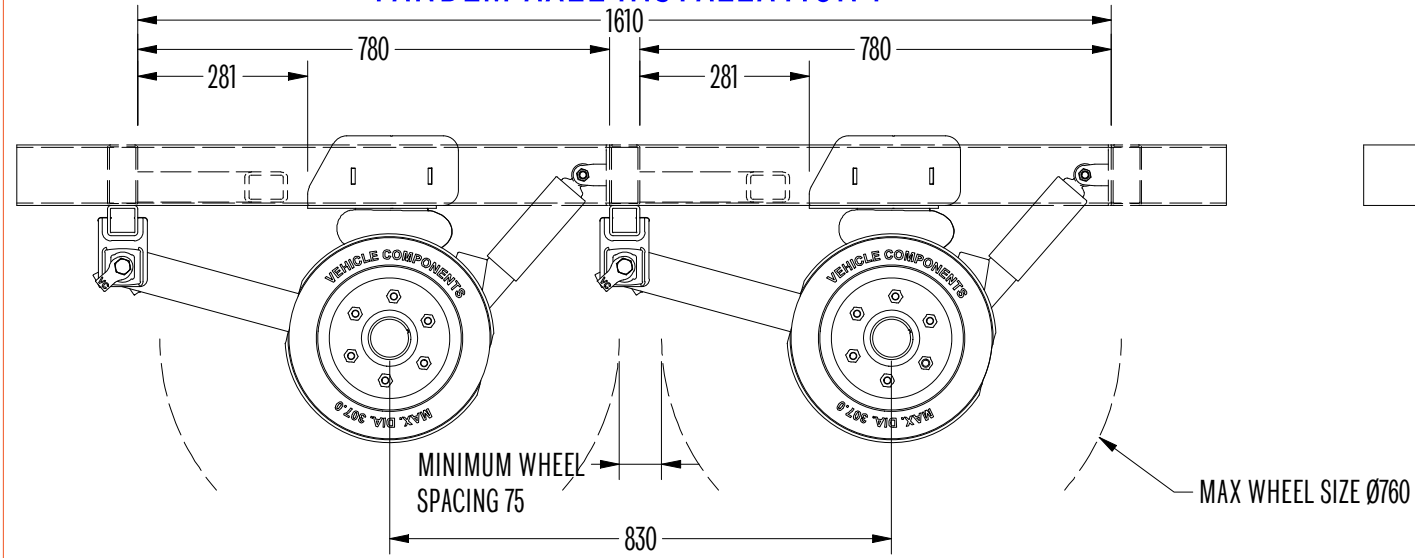
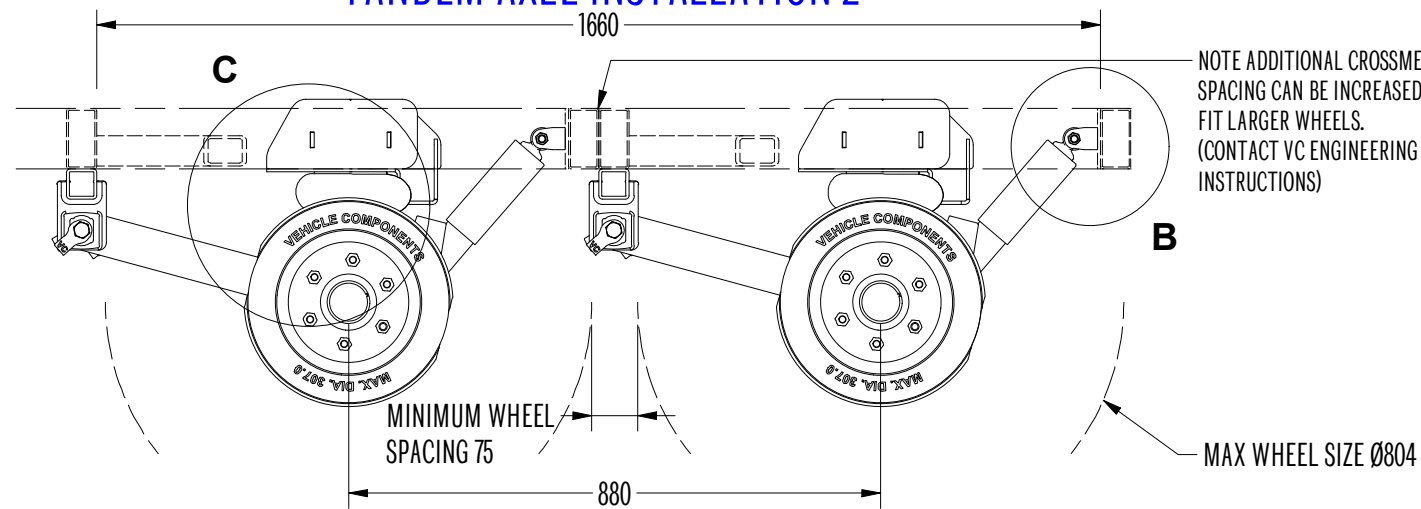




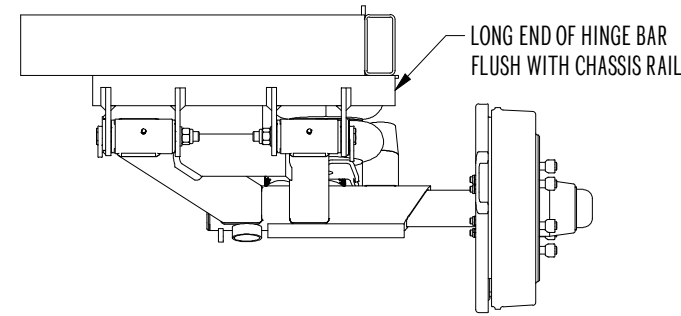
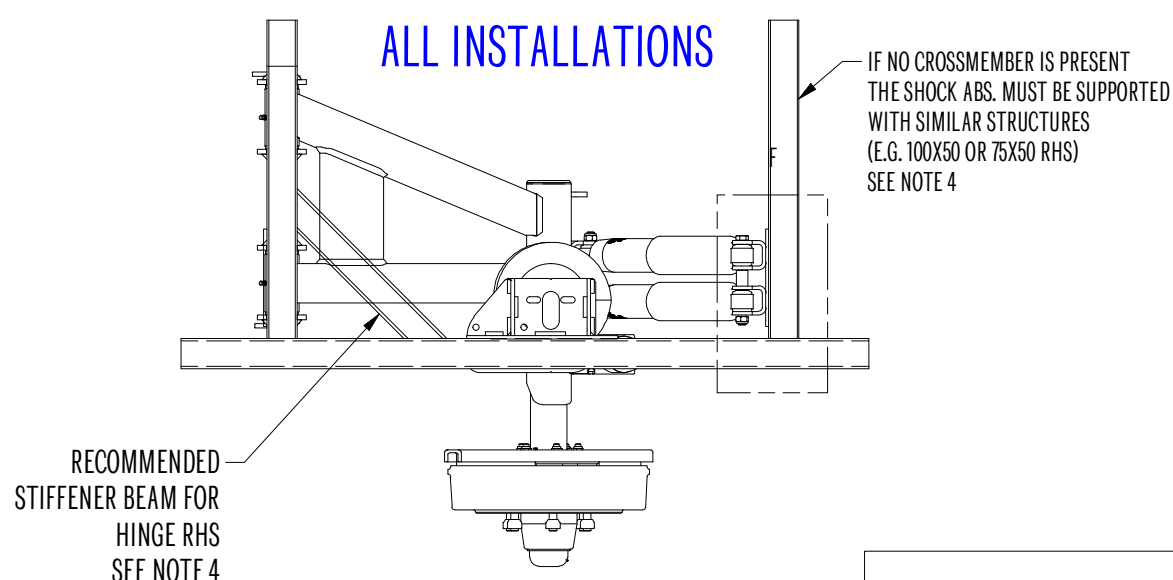
### TANDEM AXLE INSTALLATION 1



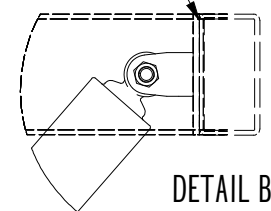
### TANDEM AXLE INSTALLATION 2



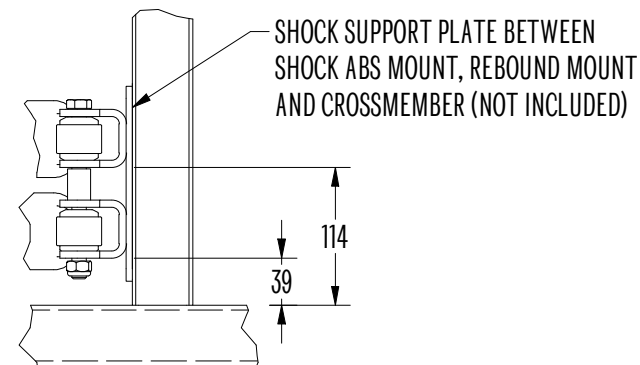
### ALL INSTALLATIONS



SHOCK SUPPORT PLATE HAS TO BRACE FULL HEIGHT OF CROSSMEMBER (NOT INCLUDED) SEE NOTE 4

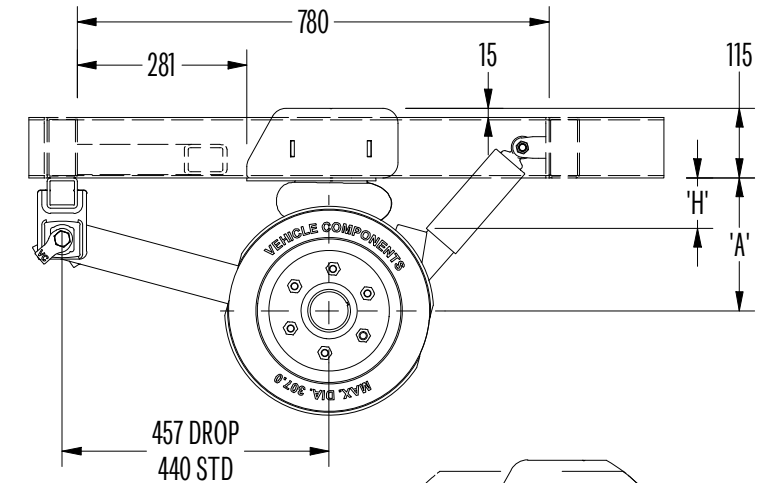


DETAIL B

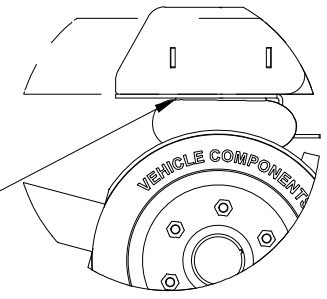


DETAIL F  
SHOCK BRACKETS

### SINGLE AXLE INSTALLATION 1



OPTIONAL BOLT-ON KIT 33C 001 TO SUIT CRUISEMASTER COIL ATTACHES IN FRONT OF AIRBAG POSITION HERE SEE NOTE 1



DETAIL C

### NOTES

- OPTIONAL BOLT-ON KIT 33C 011 TO SUIT CRUISEMASTER COIL.
- \* AB 0140-V AIRBAG USED ONLY WITH TWIN SHOCK ABSORBER KIT.
- MIN. OUTER CHASSIS RAIL WIDTH 1150mm
- CROSSMEMBERS/OUTRIGGERS TO BE FULL CHASSIS RAIL HEIGHT

### WARNINGS

- NEVER INFLATE AN UNRESTRICTED AIRSPRING.
- ONCE INSTALLED, BEFORE INFLATION, ENSURE NOTHING IS IN CONTACT WITH THE WORKING SURFACES OF THE AIRSPRING.
- CHECK SYSTEM FOR LEAKS BEFORE OPERATION.

### LUBRICATION

GREASE BORE AND FLANGE OF POLYURETHANE BUSHES DURING INSTALLATION AND REGULARLY DURING SERVICE USING AUTOMOTIVE BEARING GREASE. INJECT THROUGH GREASE NIPPLE UNTIL GREASE STARTS COMING OUT BETWEEN HINGE AND BUSH.

A = APPROXIMATE VERTICAL DISTANCE BETWEEN AXLE CENTER AND BOTTOM OF CHASSIS AT AXLE LOAD.

H = APPROXIMATE VERTICAL DISTANCE BETWEEN TOP CENTER OF BUMP STOP AND BOTTOM OF CHASSIS AT AXLE LOAD.

RIDE HEIGHT DIMENSIONS (mm)				
AIR SPRING	MAX ATM SGL/TDM (kg)	STD AXLE 'A'	DROP AXLE 'A'	BUMP STOP 'H'
AB 0121-V (255)	1400/2800	205	140	65
AB 0136-V (224)	1700/3400	215	150	75
AB 0140-V* (26)	2600/4400	230	165	85

### CM XT AIR SUSPENSION INSTALLATION

331 250

MATERIAL:

ALL DIMENSIONS IN MILLIMETERS UNLESS OTHERWISE STATED

DO NOT SCALE

SUPPLIER CODE:

FINISH:

MASS: 385.000 kg  
VOLUME: 74551086.1 mm<sup>3</sup>

DRAWN: AJ  
DATE: 13-Nov-17

PAGE: 1 of 1  
SHEET SIZE: A3

TITLE

PART NUMBER

DIM	TOL
0	± 0.5
0.0	± 0.2
0.00	± 0.05
MACHINED	3.2

GEN SHORE HARDNESS TOL ± 3  
REMOVE SHARP EDGES

