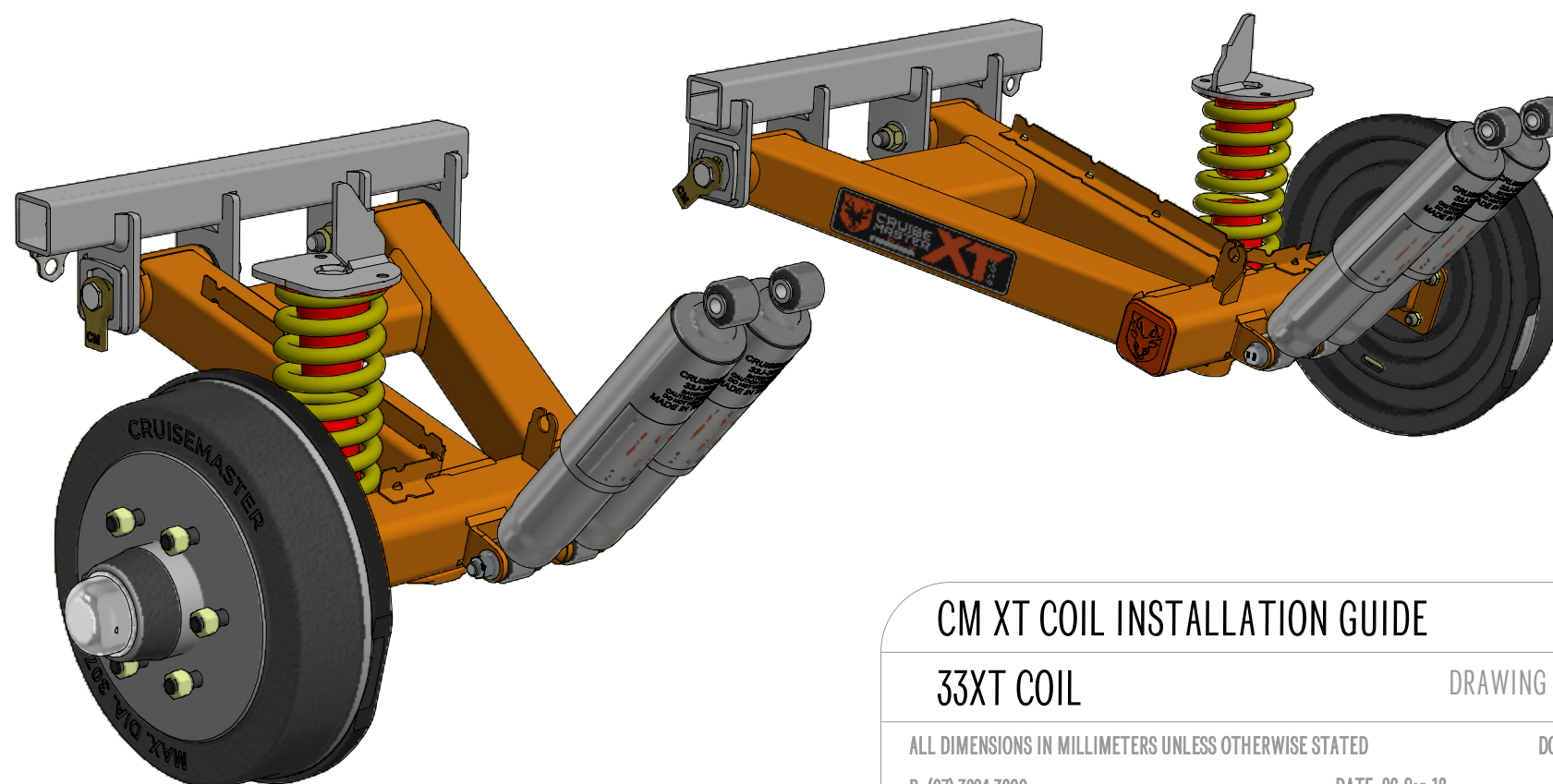




CHASSIS PREPARATION AND SUSPENSION INSTALLATION GUIDE

2. LAYOUT
3. WELDING
4. ASSEMBLY
5. ALIGNMENT
6. PARTS LIST



CM XT COIL INSTALLATION GUIDE

TITLE

33XT COIL

DRAWING NUMBER

ALL DIMENSIONS IN MILLIMETERS UNLESS OTHERWISE STATED

DO NOT SCALE

P: (07) 3624 3800

DATE: 26-Sep-18

W: CRUISEMASTER.COM.AU

REV: 0

E: SALES@CRUISEMASTER.COM.AU

SHEET SIZE: A3

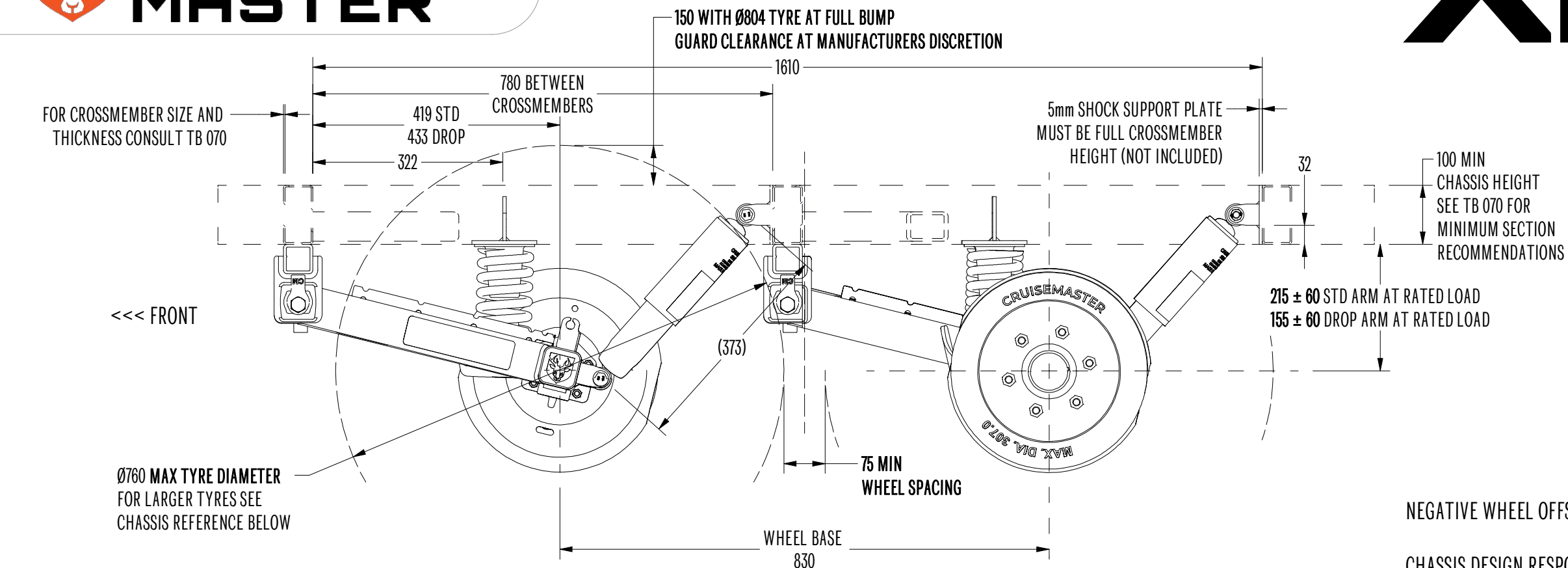
A: 352B BILSEN ROAD, GEEBUNG, QLD 4034

PAGE: 1 of 7

REV	DESCRIPTION	ECN	NAME	DATE
2	Correct formatting	1706	BM	09/08/2020
1	Release for Production	1706	BM	03/09/2020



2 - LAYOUT

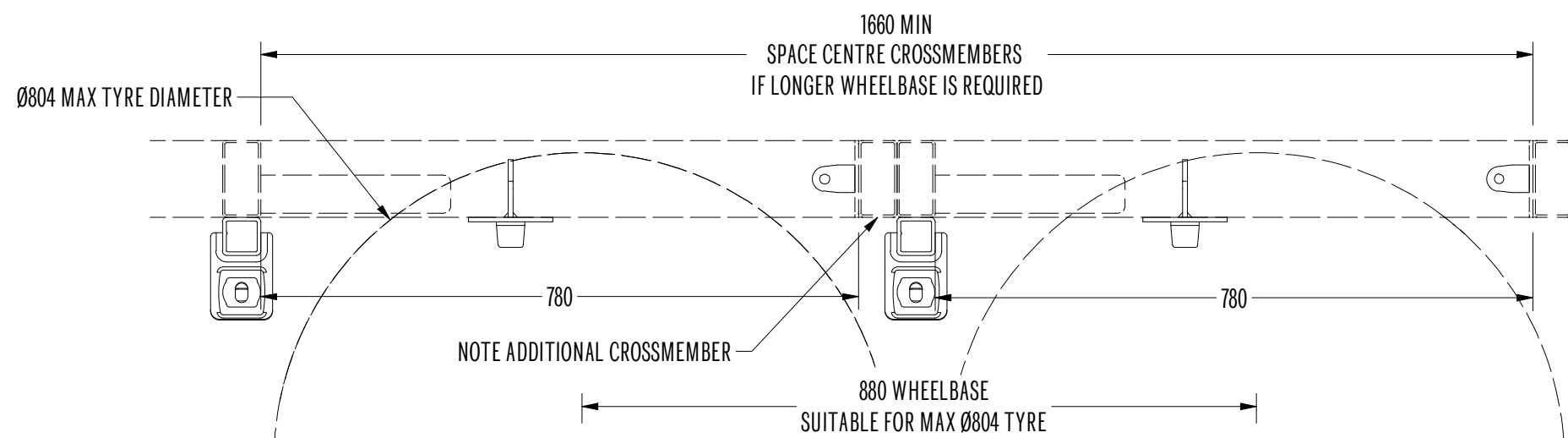


FOR CROSSMEMBER SIZE AND THICKNESS CONSULT TB 070

Ø760 MAX TYRE DIAMETER FOR LARGER TYRES SEE CHASSIS REFERENCE BELOW

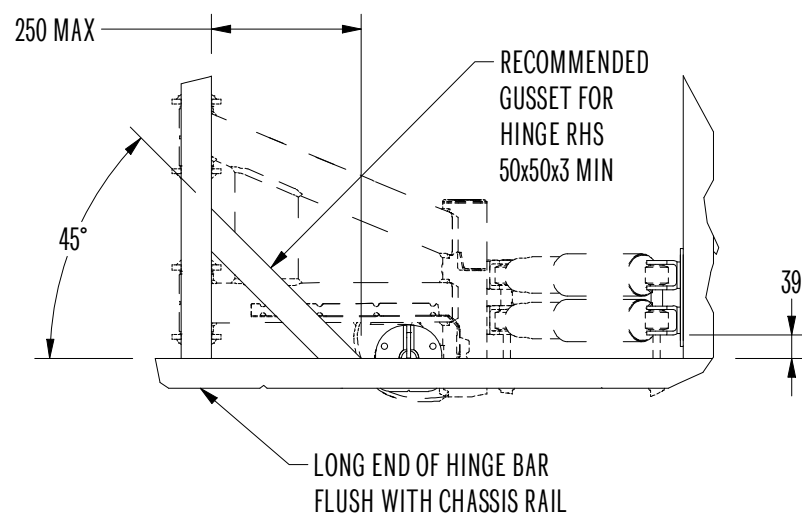
NEGATIVE WHEEL OFFSET NOT ALLOWED

CHASSIS DESIGN RESPONSIBILITY LIES WITH MANUFACTURER. CONTACT CRUISEMASTER ENGINEERING FOR DESIGN ADVICE



MINIMUM OUTER CHASSIS RAIL WIDTH 1150mm.
CROSSMEMBERS AND OUTRIGGERS MUST BE FULL CHASSIS RAIL HEIGHT

NOTE FOR TANDEM AXLES
THIS IS A CLOSE COUPLED, NON-LOAD SHARING SUSPENSION. ENSURE THAT THE LOAD ON THE AXLE GROUP DOES NOT EXCEED THE REQUIREMENTS OF THE NATIONAL CODE OF PRACTICE (VSB 1 - BUILDING SMALL TRAILERS)



LUBRICATION
GREASE BORE AND FLANGE OF POLYURETHANE BUSHES DURING INSTALLATION AND REGULARLY DURING SERVICE USING AUTOMOTIVE BEARING GREASE. INJECT THROUGH GREASE NIPPLE UNTIL GREASE STARTS COMING OUT BETWEEN HINGE AND BUSH.

CM XT COIL INSTALLATION GUIDE

TITLE

33XT COIL

DRAWING NUMBER

ALL DIMENSIONS IN MILLIMETERS UNLESS OTHERWISE STATED

DO NOT SCALE

P: (07) 3624 3800

DATE: 26-Sep-18

W: CRUISEMASTER.COM.AU

REV: 0

E: SALES@CRUISEMASTER.COM.AU

SHEET SIZE: A3

A: 352B BILSEN ROAD, GEEBUNG, QLD 4034

PAGE: 2 of 7

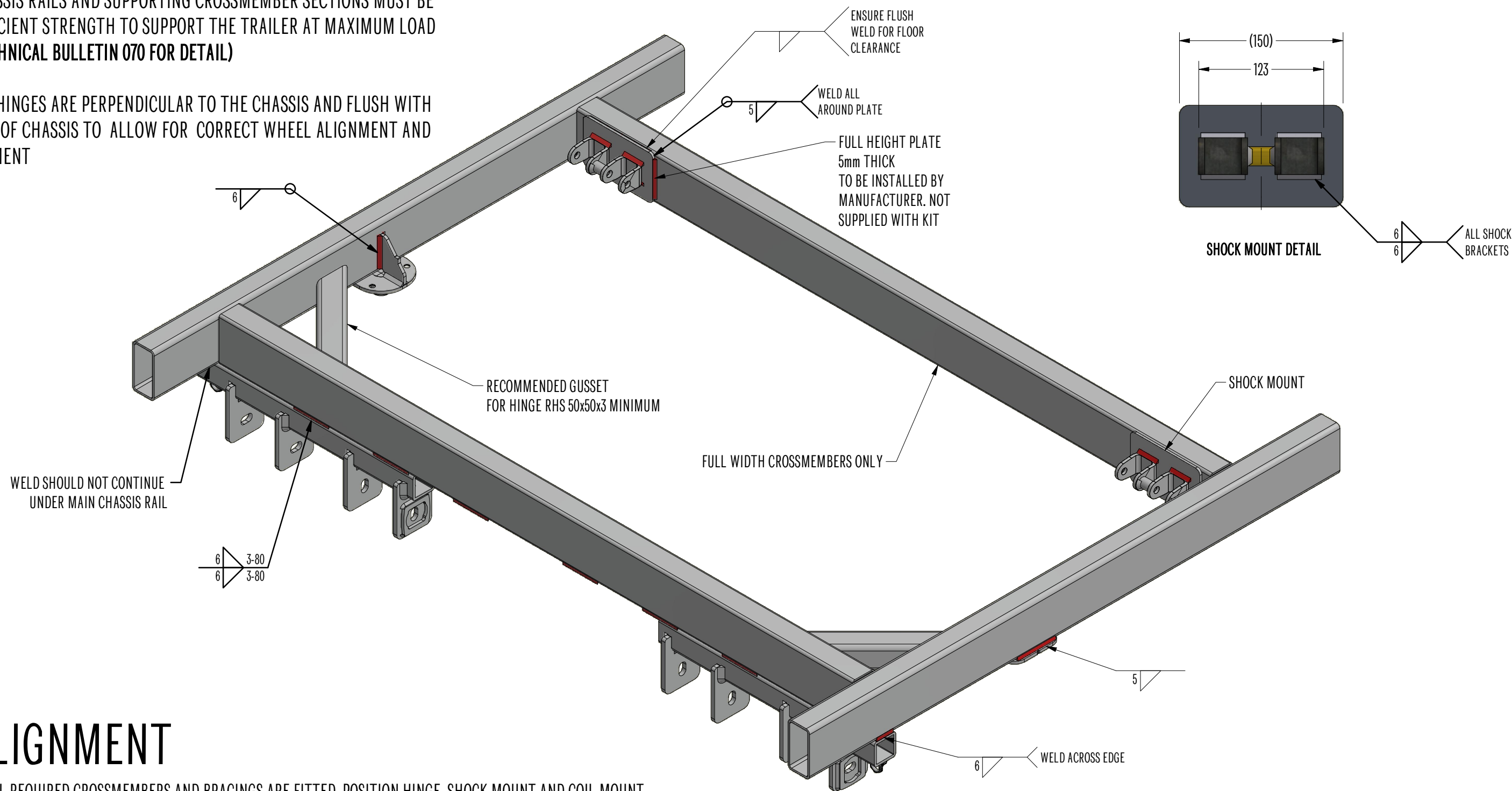


3 - WELDING - COIL



ALL CHASSIS RAILS AND SUPPORTING CROSSMEMBER SECTIONS MUST BE OF SUFFICIENT STRENGTH TO SUPPORT THE TRAILER AT MAXIMUM LOAD (SEE TECHNICAL BULLETIN 070 FOR DETAIL)

ENSURE HINGES ARE PERPENDICULAR TO THE CHASSIS AND FLUSH WITH OUTSIDE OF CHASSIS TO ALLOW FOR CORRECT WHEEL ALIGNMENT AND ADJUSTMENT



1. ALIGNMENT

ENSURE ALL REQUIRED CROSSMEMBERS AND BRACINGS ARE FITTED, POSITION HINGE, SHOCK MOUNT AND COIL MOUNT
ENSURE HINGES ARE SQUARE TO MAIN CHASSIS RAIL.

2. HINGES

WELD HINGES TO CROSSMEMBERS AS SPECIFIED

3. SHOCK AND COIL MOUNTS

ENSURE SHOCK AND COIL MOUNTS ARE FITTED AS SHOWN

CM XT COIL INSTALLATION GUIDE TITLE

33XT COIL DRAWING NUMBER

ALL DIMENSIONS IN MILLIMETERS UNLESS OTHERWISE STATED DO NOT SCALE

P: (07) 3624 3800

W: CRUISEMASTER.COM.AU

E: SALES@CRUISEMASTER.COM.AU

A: 352B BILSEN ROAD, GEEBUNG, QLD 4034

DATE: 26-Sep-18

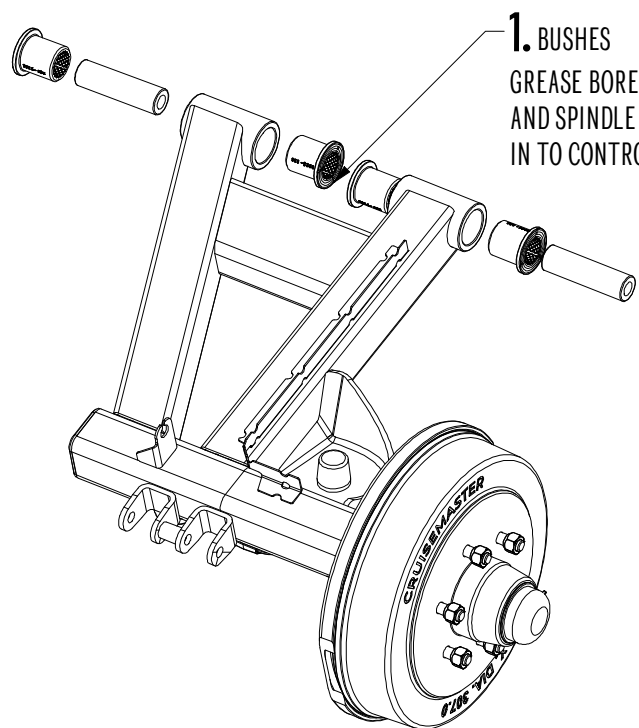
REV: 0

SHEET SIZE: A3

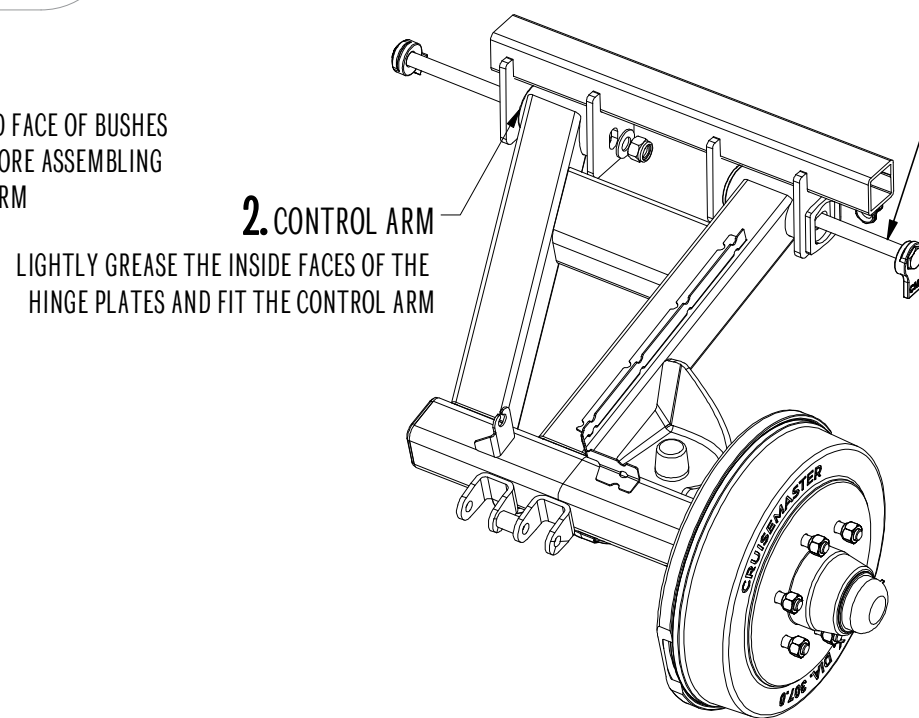
PAGE: 3 of 7



4 - COIL ASSEMBLY



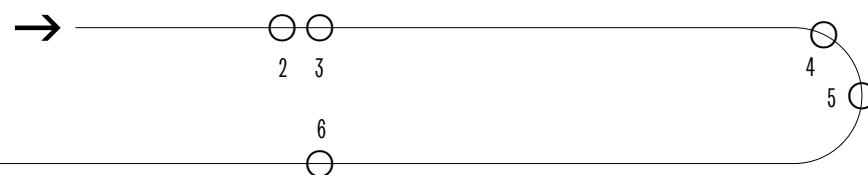
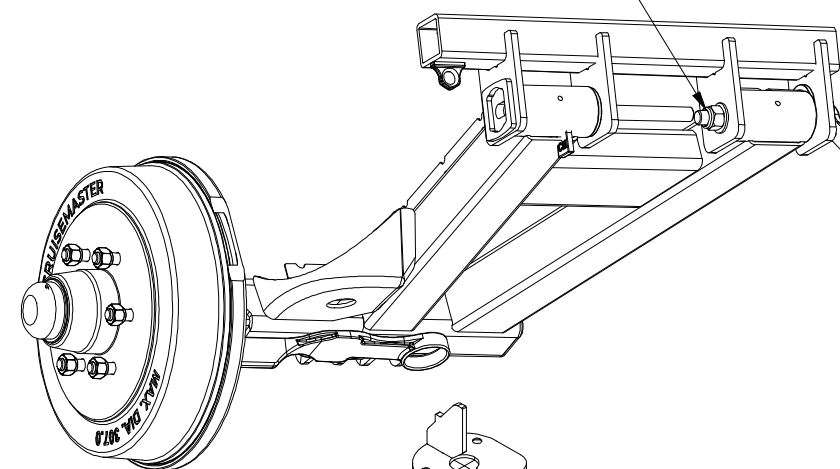
1. BUSHES
GREASE BORE AND FACE OF BUSHES AND SPINDLE BEFORE ASSEMBLING IN TO CONTROL ARM



2. CONTROL ARM
LIGHTLY GREASE THE INSIDE FACES OF THE HINGE PLATES AND FIT THE CONTROL ARM

3. HINGE BOLTS
ASSEMBLE THE BOLTS WITH ADJUSTERS FROM OUTSIDE HINGE FACES

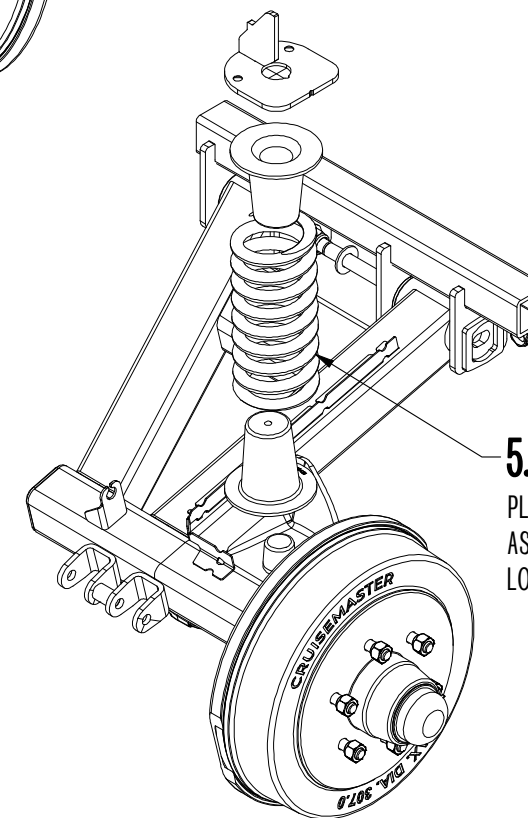
4. HINGE NUTS
ASSEMBLE NUTS TO PREVIOUSLY ASSEMBLED BOLTS TORQUE TO SPEC ONCE ALIGNED



6. SHOCK ABSORBERS
ASSEMBLE SHOCKS INTO PROVIDED BRACKETS SINGLE SHOCKS SHOULD BE ASSEMBLED IN THE INBOARD MOUNT

7. TORQUE AND GREASE

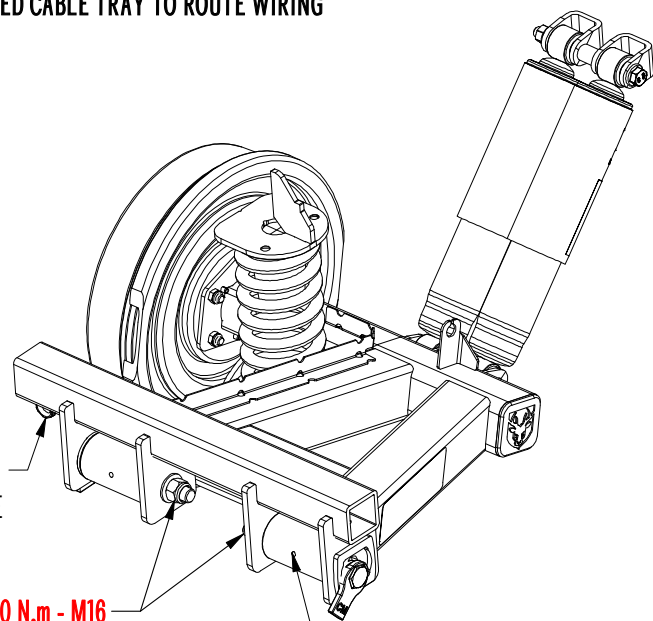
- REFER TO WHEEL ALIGNMENT FOR ADJUSTER POSITIONING
- USE GREASE NIPPLE TO FILL HINGE CAVITY (GREASE SHOULD SQUEEZE FROM BUSHES)
- ONCE HINGE IS ASSEMBLED TORQUE ALL BOLTS AS SPECIFIED
- USE PROVIDED CABLE TRAY TO ROUTE WIRING



5. BUMP STOPS AND SPRING
PLACE BUMP STOPS INSIDE COILS ASSEMBLE BUMP STOPS AND COIL TO LOCATORS ON CHASSIS AND ARM

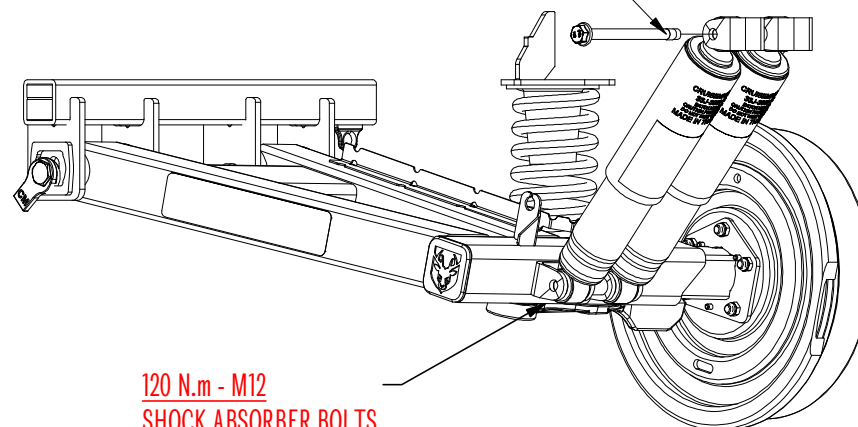
HANDBRAKE CABLE GUIDE
ROUTE CABLE THROUGH BEFORE ATTACHING TO BRAKE

190 N.m - M16 HINGE NUTS



STANDARD GREASE NIPPLE FITMENT IS M6 STRAIGHT M6 x 90 DEGREE AVAILABLE ON REQUEST

120 N.m - M12 SHOCK ABSORBER BOLTS



CM XT COIL INSTALLATION GUIDE

TITLE

33XT COIL

DRAWING NUMBER

ALL DIMENSIONS IN MILLIMETERS UNLESS OTHERWISE STATED

DO NOT SCALE

P: (07) 3624 3800

DATE: 26-Sep-18

W: CRUISEMASTER.COM.AU

REV: 0

E: SALES@CRUISEMASTER.COM.AU

SHEET SIZE: A3

A: 352B BILSEN ROAD, GEEBUNG, QLD 4034

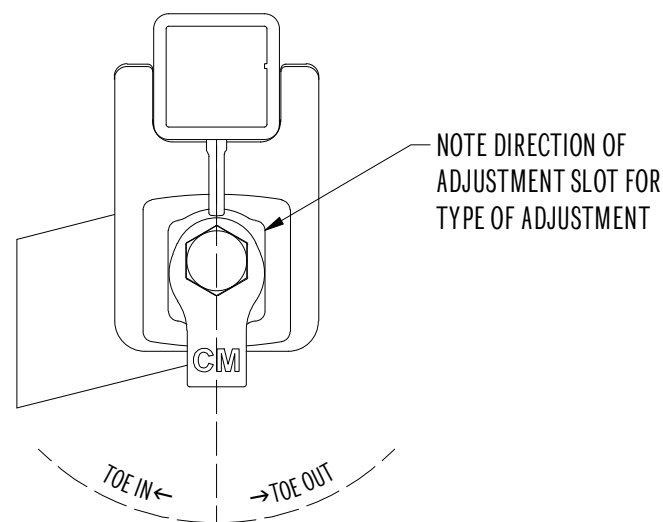
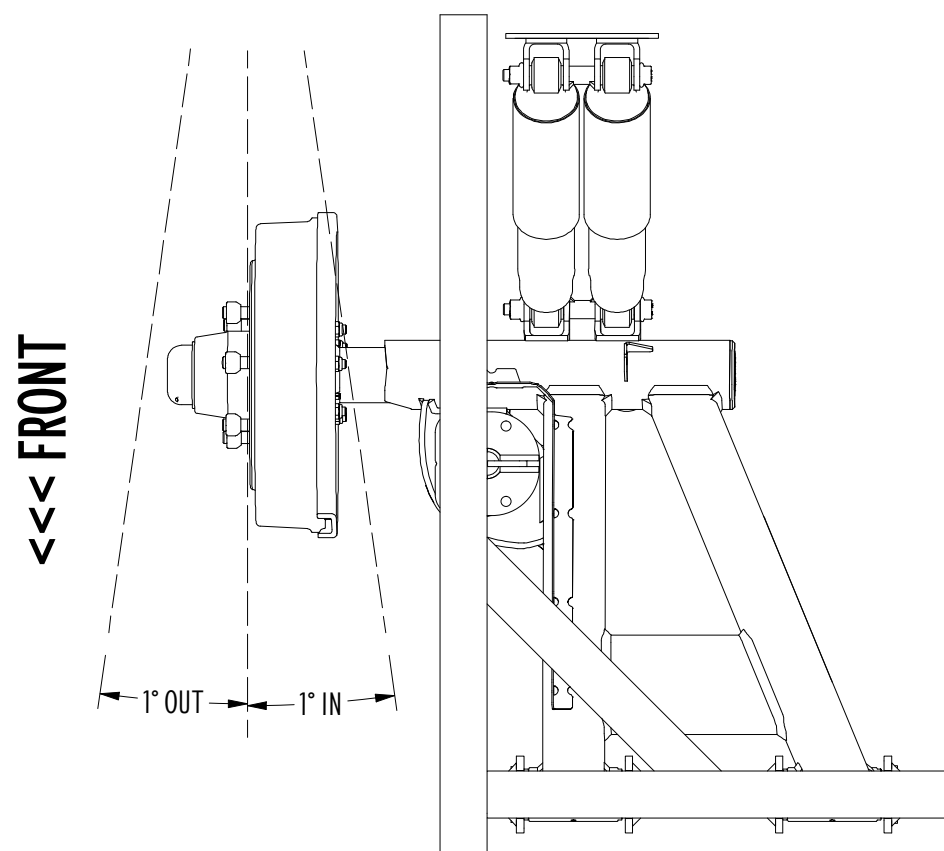
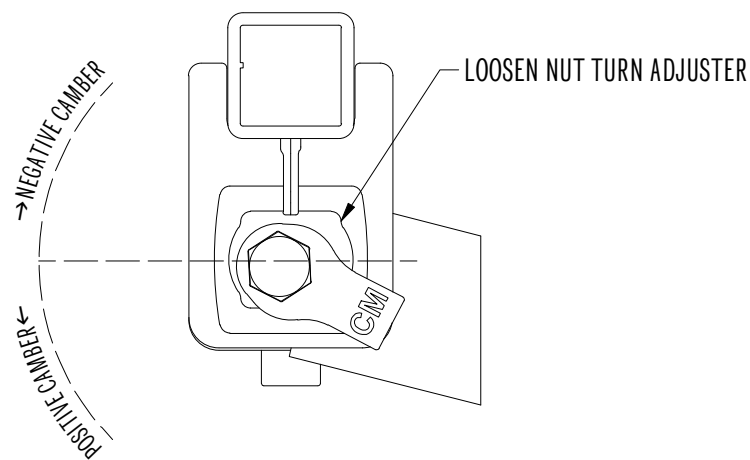
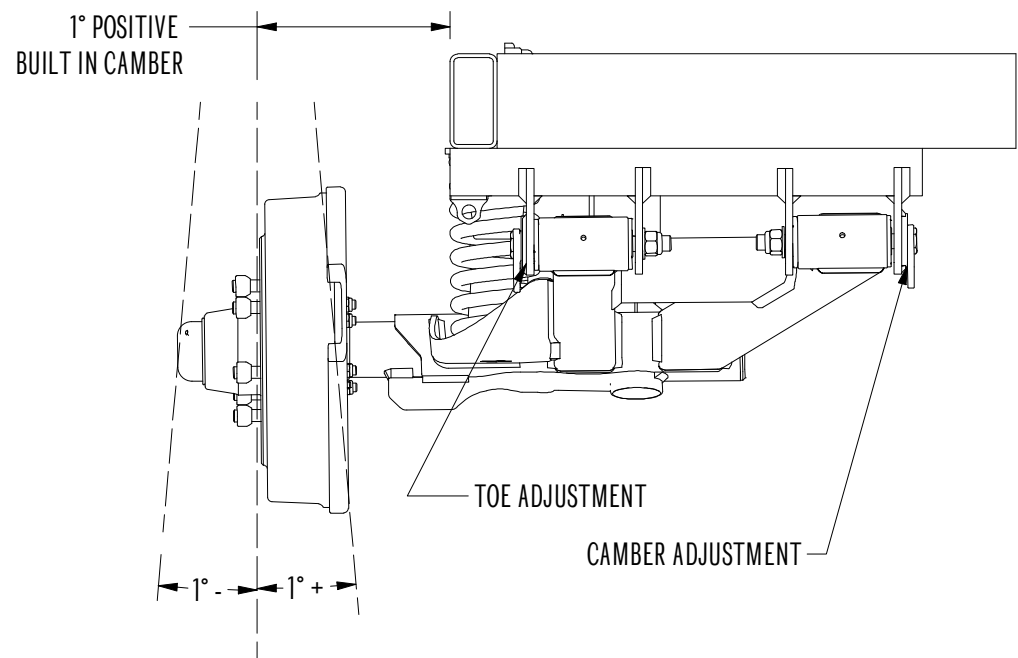
PAGE: 4 of 7



5 - ALIGNMENT

CAMBER ADJUSTMENT

THE SUSPENSION HAS 1 DEGREE OF POSITIVE CAMBER BUILT IN TO ENSURE THE WHEELS ARE ALIGNED CORRECTLY UNDER LOAD. WHEELS ARE RECOMMENDED TO HAVE 0° TO 0.5° NEGATIVE CAMBER AT RATED LOAD.



WHEEL ALIGNMENT PROCEDURE

1. ENSURE THE TRAILER IS FULLY LOADED AND ON A FLAT SURFACE, MOVE THE TRAILER BACKWARDS AND FORWARDS TO ELIMINATE ANY TWIST IN THE WHEELS.

MEASUREMENT

2. PLACE A STRAIGHT EDGE ACROSS THE WHEEL, EDGE OF RIM OR DRUM FACE THEN MEASURE THE DISTANCE FROM THE STRAIGHT EDGE TO THE CHASSIS RAIL. (WHEELS ON A SINGLE OR TANDEM FRONT AXLE SHOULD BE ADJUSTED TO HAVE 2MM TOE-IN. WHEELS ON TANDEM REAR AXLE SHOULD MEASURE PARALLEL FROM THE CHASSIS RAIL.)

3. IT IS RECOMMENDED TO USE A DIGITAL SPIRIT LEVEL TO MEASURE CAMBER ACROSS THE WHEEL RIM OR DRUM FACE.

TOE OR CAMBER ADJUSTMENT

4. LIFT THE VEHICLE TO UNLOAD THE SUSPENSION. DO NOT CLIMB UNDER A VEHICLE WHICH IS ONLY SUPPORTED BY JACKS, ENSURE PROPER VEHICLE STANDS ARE USED.

5. LOOSEN THE HINGE NUT AND TURN THE ADJUSTER IN THE DIRECTION REQUIRED TO OBTAIN DESIRED ADJUSTMENT.

6. LOWER THE VEHICLE TO FULLY LOAD THE SUSPENSION AND MEASURE THE ALIGNMENT AGAIN TO CHECK ADJUSTMENT IS SATISFACTORY.

7. IF THE NECESSARY ALIGNMENT HAS NOT BE ACHIEVED, REPEAT FROM STEP 4

8. WHEN ADJUSTMENT IS COMPLETED, TIGHTEN AND TORQUE HINGE NUT. (SEE ASSEMBLY SHEET)

CM XT COIL INSTALLATION GUIDE

TITLE

33XT COIL

DRAWING NUMBER

ALL DIMENSIONS IN MILLIMETERS UNLESS OTHERWISE STATED

DO NOT SCALE

P: (07) 3624 3800

DATE: 26-Sep-18

W: CRUISEMASTER.COM.AU

REV: 0

E: SALES@CRUISEMASTER.COM.AU

SHEET SIZE: A3

A: 352B BILSEN ROAD, GEEBUNG, QLD 4034

PAGE: 5 of 7

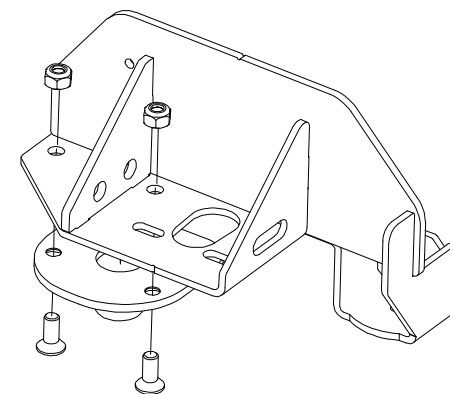


6 - OPTIONS AND PARTS LIST COIL



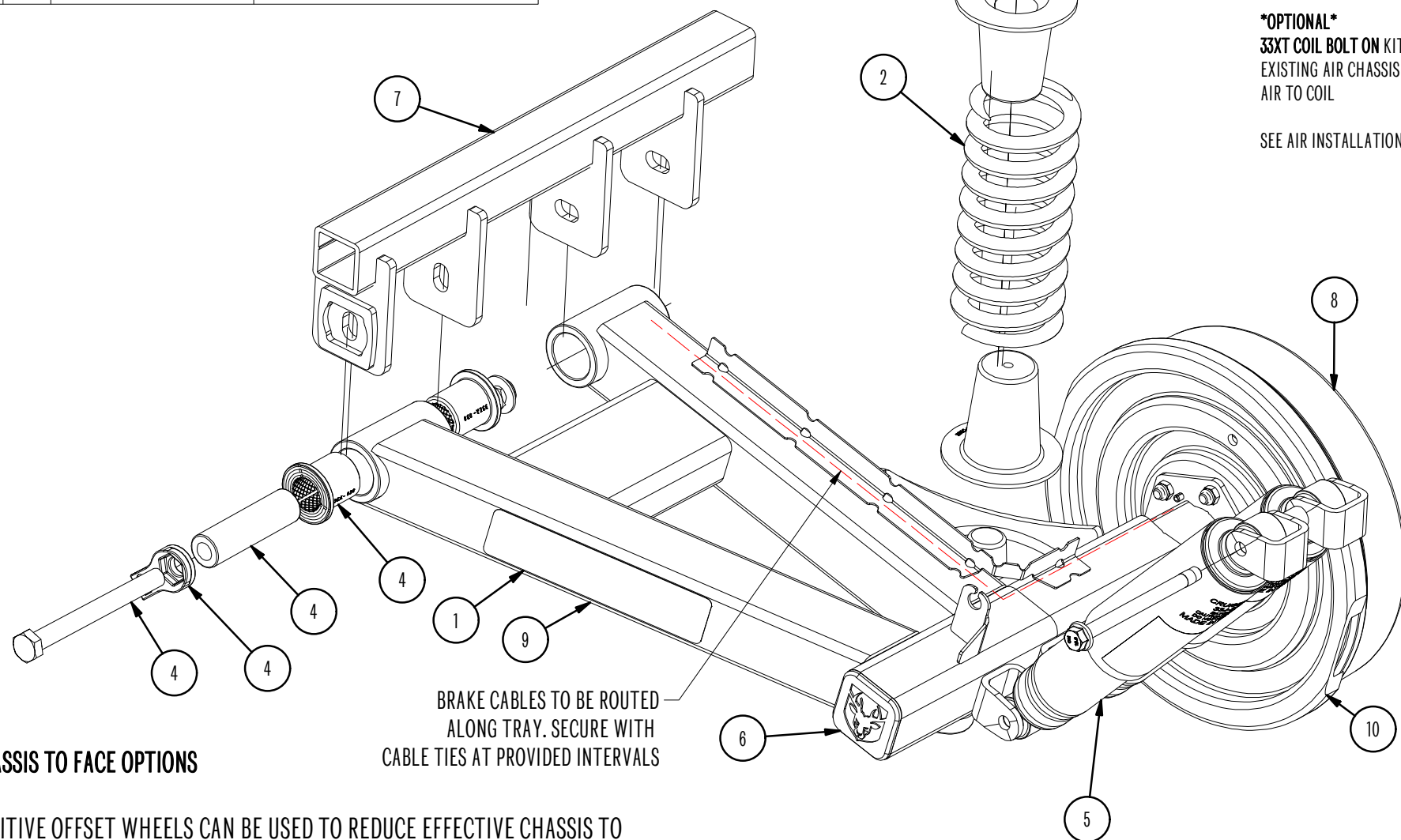
ITEM	QTY	PART NUMBER	DESCRIPTION
1	1	33XT-SC110	XT BASE COIL FRAME KIT
2	2	33SC-*VARIES*	SEE COIL TABLE
3	1	33XT-COIL-HD-TS	COIL AND SHOCK MOUNT + BUMP STOP KIT
4	1	33XT-SPINDLE-BUSH-KIT	SPINDLE KIT
5	4	33J-*VARIES*	SEE SHOCK TABLE
6	2	33S-221	PLASTIC END CAP 65
7	2	33EA 017	INDEPENDENT HINGE ASSY
8	2	09-*VARIES*	SEE BEARING TABLE
9	2	33S-306	XT ARM STICKER
10	1	BRAKES *VARIES*	SEE BRAKE TABLE

(2) COIL / (8) BEARING OPTIONS / (3) BUMP STOPS					
AXLES	RATING - ATM / GTM (kg)	STD BEARING	STD BRAKE (INCH)	COIL	BUMP STOP
SINGLE	1200 / 1080	SLM	10	33SC-550	33SC-107 - BLUE
SINGLE	1600 / 1440	SLM / VT	10 / 12	33SC-750	33SC-107 - BLUE
SINGLE	2200 / 1980	VT	12	33SC-950	33SC-107 - BLUE
SINGLE	2600 / 2340	VT	12	33SC-1250-1400	33SC-110 - RED
SINGLE	2800 / 2520	VT	12	33SC-1250-1400	33SC-110 - RED
TANDEM	2200 / 1980	SLM / VT	10 / 12	33SC-550	33SC-107 - BLUE
TANDEM	2900 / 2610	SLM / VT	10 / 12	33SC-750	33SC-107 - BLUE
TANDEM	3300 / 2970	VT	12	33SC-850	33SC-107 - BLUE
TANDEM	3700 / 3330	VT	12	33SC-950	33SC-107 - BLUE
TANDEM	4100 / 3690	VT	12	33SC-1250-1400	33SC-110 - RED
TANDEM	4500 / 4050	VT	12	33SC-1250-1400	33SC-110 - RED



OPTIONAL
33XT COIL BOLT ON KITS ARE AVAILABLE TO CONVERT EXISTING AIR CHASSIS WITH THE COIL/AIR BRACKET FROM AIR TO COIL

SEE AIR INSTALLATION GUIDE FOR WELDING INFORMATION



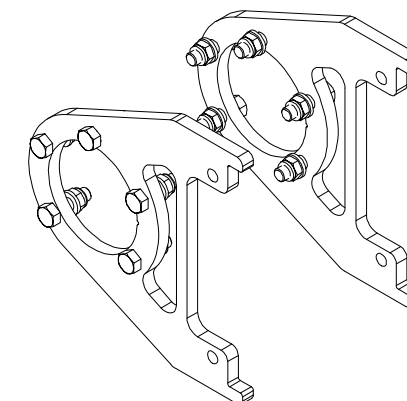
CHASSIS TO FACE OPTIONS

POSITIVE OFFSET WHEELS CAN BE USED TO REDUCE EFFECTIVE CHASSIS TO FACE WITHIN PERMISSIBLE RANGE

RED ZONE DENOTES UNACCEPTABLE C/F AND WEIGHT COMBINATION

SINGLE AXLE BY ATM							
	200	210	220	230	240	250	260
2,800							
2,600							
2,200							
1,600							
1,200							

TANDEM AXLE BY ATM								
	200	210	220	230	240	250	260	
4,450								
4,100								
3,700								
3,300								
2,900								
2,200								



(10) BRAKE OPTIONS	
OPTION	CONDITIONS
CRUISEMASTER ELEC.	
DEXTER ELEC.	
ALKO ELEC.	
DEEMAX DISC*	VT ONLY

NOTE: 33XT-HYD-CONV KITS AVAILABLE TO CONVERT EXISTING 12" ELECTRIC BRAKE KITS TO DEEMAX DISC WHERE COMPATIBLE

(5) SHOCKS		
PART	KITS	BOLT KIT
33J-2900	SINGLE STD WHITE	33C-030
33J-3000	SINGLE HD SILVER	33C-030
33J-2900	DUAL STD WHITE	33C-031
33J-3000	DUAL HD SILVER	33C-031

CM XT COIL INSTALLATION GUIDE

33XT COIL

TITLE

DRAWING NUMBER

ALL DIMENSIONS IN MILLIMETERS UNLESS OTHERWISE STATED

DO NOT SCALE

P: (07) 3624 3800
 W: CRUISEMASTER.COM.AU
 E: SALES@CRUISEMASTER.COM.AU
 A: 352B BILSEN ROAD, GEEBUNG, QLD 4034

DATE: 26-Sep-18
 REV: 0
 SHEET SIZE: A3
 PAGE: 6 of 7